



FFI-RAPPORT

17/00412

LYBIN 6.2 2200

user manual

—

Elin Dombestein

LYBIN 6.2 2200

user manual

Elin Dombestein

Keywords

Akustikk

Sonar

Modellering og simulering

Programmering

FFI-rapport

FFI-RAPPORT 17/00412

Prosjektnummer

396401

ISBN

P: 978-82-464-2890-1

E: 978-82-464-2891-8

Approved by

Connie Elise Solberg, *Research Manager*

Elling Tveit, *Director*

Summary

The acoustic ray trace model LYBIN is a well established and frequently used sonar prediction model owned by the Norwegian Defence Materiel Agency (NDMA). The model is used aboard navy vessels as well as in training situations on shore. LYBIN has become an important tool in both planning and evaluation of maritime operations. Earlier versions are already integrated in combat system software, decision aids and tactical trainers.

The calculation kernel of LYBIN is implemented as a software module called LybinCom. In addition there exists a graphical user interface which can be used together with LybinCom to build a stand-alone executable application. This stand-alone executable application is called LYBIN.

On behalf of NDMA, the Norwegian Defence Research Establishment (FFI) has been responsible for testing, evaluation and further development of LYBIN since the year 2000. During this period, several new versions have been released.

This document is a user guide for LYBIN 6.2 2200. The main difference compared to the previous release LYBIN 6.2, is the new target strength tables. In addition, the editors for range dependent bottom back scatter, volume back scatter and bottom loss are redesigned for improved user friendliness.

Sammendrag

Den akustiske strålegangsmodellen LYBIN er en etablert og mye brukt sonarytelsesmodell som eies av Forsvarsmateriell (FMA). Modellen brukes ombord på marinefartøy og i treningssituasjoner på land. LYBIN er blitt et viktig verktøy både i planlegging og evaluering av maritime operasjoner. Tidligere versjoner er allerede integrert i programvare for kampsystemer, beslutningsstøtte og taktiske trenere.

LYBINs beregningskjerne er implementert som en software modul kalt LybinCom. I tillegg eksisterer det et grafisk brukergrensesnitt som sammen med LybinCom kan brukes for å bygge en frittstående eksekverbar applikasjon. Det er denne frittstående applikasjonen som kalles LYBIN.

Forsvarets forskningsinstitutt (FFI) har på vegne av FMA vært ansvarlig for test, evaluering og videreutvikling av LYBIN siden år 2000. I løpet av denne perioden har flere nye versjoner blitt utgitt.

Dette dokumentet er en brukermanual for LYBIN 6.2 2200. Den største endringen i forhold til forrige versjon, LYBIN 6.2, er de nye målstyrketabellene. I tillegg er editorene for avstandsavhengig tilbakespredning fra bunnen, tilbakespredning fra vannvolumet og bunntap redesignet for å bli mer brukervennlige.

Content

Summary	3
Sammendrag	4
1 Introduction	9
2 Hardware requirements, software requirements and installation	10
2.1 Hardware requirements	10
2.2 Software requirements	10
2.3 Installing LYBIN	10
3 Getting started with LYBIN	11
4 The main screen	12
4.1 The Main Menu	14
4.2 The Toolbar	16
4.3 The parameter pane	17
4.4 Plotting	19
4.5 Use of context menus and tooltips throughout the application	20
5 Description of the various plots	21
5.1 Ray trace	21
5.2 Transmission Loss	22
5.3 Reverberation Curves	23
5.4 Signal Excess	25
5.5 Probability of detection	26
5.6 Environment plot	26
5.7 Plot History	28
6 Entering parameters from the main screen	29
6.1 Sonar settings	29
6.1.1 Parameters specific to active sonar	32
6.1.2 Parameters specific to passive sonar	33

6.2	Ocean and Target	34
6.2.1	Setting target parameters	34
6.2.2	Manipulating the water parameters	36
6.2.3	Setting platform parameters	36
6.2.4	Manipulating the miscellaneous parameters	36
6.3	Model Parameters	37
6.3.1	Setting range and depth resolution	37
6.3.2	Manipulating transmission loss rays	39
6.3.3	Manipulating visual rays	39
6.3.4	Using calculation switches	39
6.4	Display	40
6.4.1	Visible Area	41
6.4.2	Signal Excess Scale	41
6.4.3	Transmission Loss Scale	42
6.4.4	Reverberation Scale	42
7	Platform editors	42
7.1	Sonar Self Noise	42
7.2	Ship editor	44
7.3	Sonar editor	46
8	Environment editors	51
8.1	Environment editor	52
8.2	Wind Speed	55
8.3	Sound Speed	56
8.4	Bottom Profile	58
8.5	Bottom Type	60
8.6	Bottom Loss	62
8.7	Reverberation and Noise	63
8.8	Volume Back Scatter	65
8.9	Bottom Back Scatter	66
8.10	Target Strength Table	68
9	Printing	70
	Appendix A: LYBIN XML format v3.0	71
A.1	Complete model with default values	71
A.2	Wind Speed XML format	74
A.3	Sound Speed XML format	75
A.4	Volume Back Scatter XML format	75

A.5	Bottom Profile XML format	76
A.6	Bottom Type XML format	77
A.7	Bottom Back Scatter XML format	77
A.8	Bottom Loss XML format	78
A.9	Reverberation and noise XML format	78
A.10	Ship XML format	79
A.11	Sonar XML format	81
Appendix B: Abbreviations		82
References		83



1 Introduction

The acoustic ray trace model LYBIN is a well-established and frequently used range dependent two-dimensional sonar prediction model owned by the Norwegian Defence Materiel Agency (NDMA). On behalf of NDMA, the Norwegian Defence Research Establishment (FFI) has been responsible for testing, evaluation and further development of LYBIN since the year 2000. During this period, several new versions of LYBIN have been released. LYBIN 6.1 [1] was released in august 2012 and LYBIN 6.2 [2] was released in February 2014. The sonar performance model LYBIN is described in [3] and [4].

LYBIN consists of a COM module (LybinCom) for the Windows platform and a graphical user interface (GUI) which can be used together with LybinCom in order to build the stand-alone executable application. The COM module, LybinCom, enables LYBIN to interact with other applications, such as mathematical models, web services, geographical information systems and more. The binary interface of LybinCom 6.2 is described in [5]. Examples of how LybinCom can be integrated with other software and the use of such combined applications are described in [6] and [7].

This document describes the installation and use of the combined product LYBIN GUI and LybinCom. From here on in the document we call this constellation LYBIN. The document is an updated version based on earlier released user guides. The main difference between LYBIN 6.2 2200 and the previous release LYBIN 6.2, is the new target strength tables. In addition, the editors for range dependent bottom back scatter, volume back scatter and bottom loss are redesigned for better usability.

The hardware and software requirements for LYBIN 6.2 2200 are given in Chapter 2 together with detailed installation instructions. Chapter 3 describes how to start and close LYBIN. The menu and toolbar options are briefly described in Chapter 4. The various plots are presented in Chapter 5 before a more thorough description of parameter input via the panes and editors are given in Chapter 6 and 8. At last, Chapter 9 describes printing. Examples of LYBIN input data model XML are included in Appendix A.

2 Hardware requirements, software requirements and installation

This section describes the requirements for installing LYBIN 6.2 2200, and the process of actually installing the software.

2.1 Hardware requirements

This section describes the minimum hardware requirements for running LYBIN 6.2 2200 with satisfactory user interaction responsiveness.

The minimum hardware requirements are based on the hardware requirements of the software requirements, described in the next section.

- 1 GHz CPU or higher.
- 512MB RAM or higher.
- 5 MB free disk space.

2.2 Software requirements

All required software, not included in the operating system by default, is listed under software requirements.

- Operating system: Microsoft Windows XP SP3 or newer.
- Microsoft .NET 2.0 Framework
- Microsoft Visual C++ 2010 Redistributable Package (x86)

LYBIN 6.2 2200 is compatible with 64-bit Windows operating systems. The LybinCom-module can also be used by other 3rd party software on a 64-bit x86 platform, but only with 32-bit software. Any interaction with for instance Matlab on a 64-bit platform must be with a 32-bit version of Matlab.

2.3 Installing LYBIN

LYBIN 6.2 2200 is shipped with two installation files:

- LYBIN 6.2 2200 Setup wPrereqs.exe
 - Contains prerequisite software not included in the operating system.
 - Used if one is uncertain whether the system fulfills the prerequisites.

-
- **LybinSetup.msi**
 - Contains only the LYBIN software.
 - Can be installed only if all prerequisites are met.


Double-clicking one of the files starts an installation wizard which will lead you through the installation of LYBIN 6.2 2200.

3 Getting started with LYBIN


Start LYBIN from the shortcut placed in the Program section of the Start menu:

Start --> All Programs --> FFI Applications --> LYBIN 6.2

The initial view when entering LYBIN is displayed in Figure 3.1.

When LYBIN is started, a set of default input parameters are loaded. These can be edited before the plots are computed, but a calculation can also be started immediately by clicking  or F5. When parameters have been modified, a calculation has to be started to generate new plots.

The parameters can either be stored in an XML file containing all input parameters (described in Appendix A) or stored in dedicated XML files for each editor (described in Chapter 8).

To quit LYBIN, select *Exit* from the *File* menu or click the  button in the screen's upper right corner.

A file with the current parameter setting is stored under the current user:

- Windows XP:
C:\Documents and Settings\\Local Settings\Application Data\FFI
- Windows Vista and newer: C:\Users\\AppData\Local\FFI

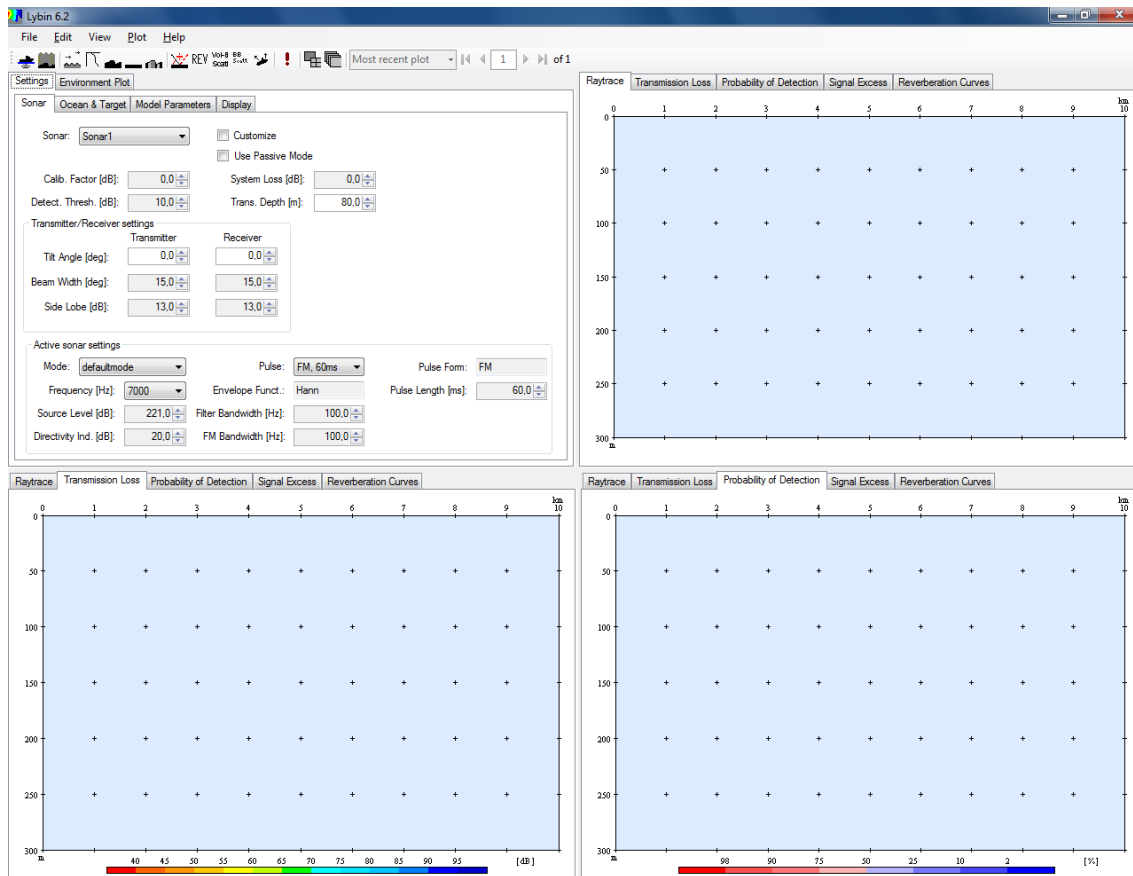


Figure 3.1 The initial view when LYBIN is started. There are four panes: one settings pane on the upper left, and the other three will display calculation results of choice.


4 The main screen

When LYBIN is started, the multi-pane main screen appears (see Figure 3.1). This screen is divided into four panes: one pane for input parameters at the upper left, and three panes dedicated to display the various result types. A main menu and a toolbar with icons pointing to functionality are located in the top of the screen. Figure 4.1 gives a schematic view of the initial main screen.

An alternative main screen is the single pane view. This view shows only one plot at a time, and has an area for input above the plotting area.


Both the multi-pane view and single pane view main screen share the main menu and a common toolbar, and provide the same functionality. The single pane view mode is displayed in Figure 4.2. To access the single pane view pane click

View --> Single Pane View

or click the icon .

To return to multi-pane view click

View --> Multipane View

or click the icon .

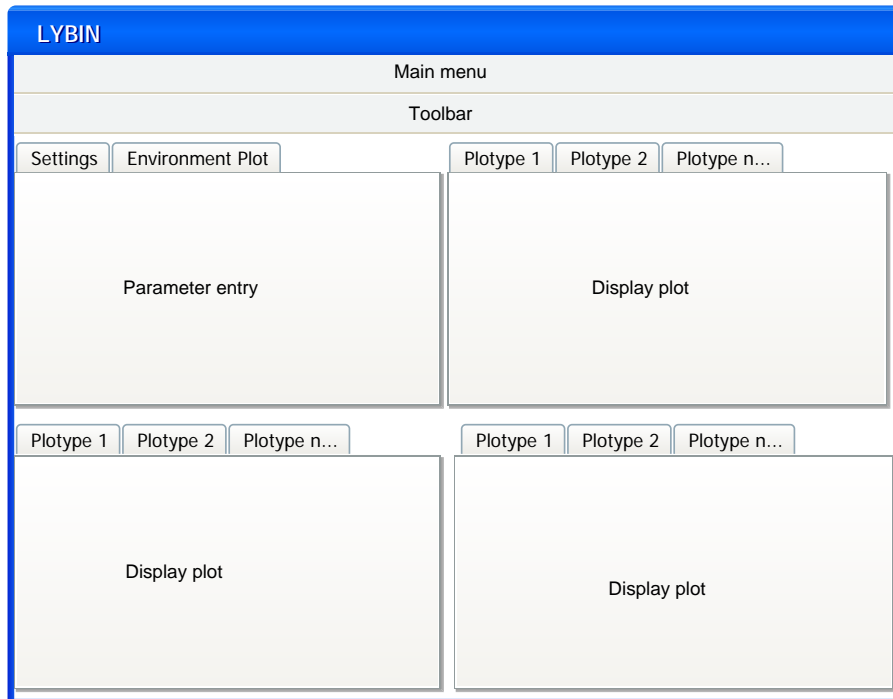


Figure 4.1 A schematic view of the LYBIN main screen.

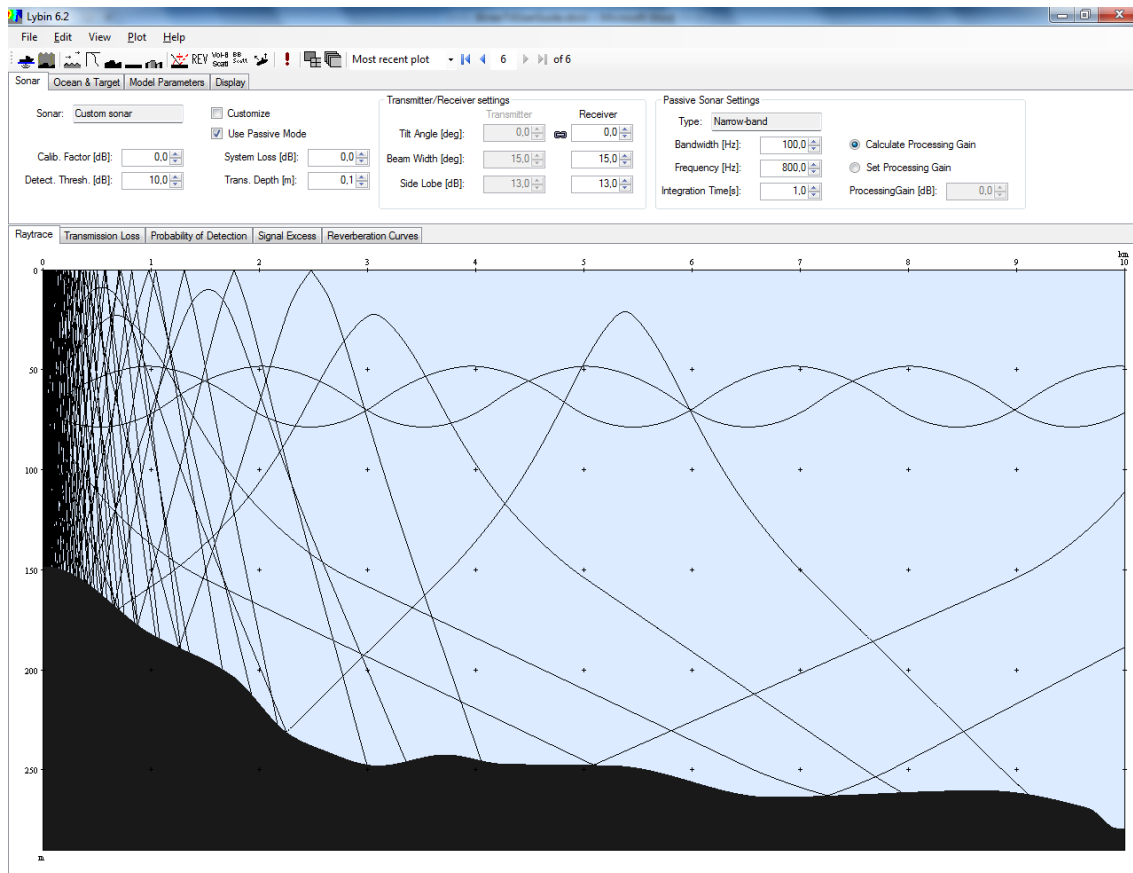


Figure 4.2 The single pane view in LYBIN where only one calculation result is displayed.

4.1 The Main Menu

This section gives an overview of the functions that can be accessed from the Main menu. References are given to later chapters where functionality needs further explanation.

The Main menu contains the following functions:

File

- *Print* – prints the upper right plot using the selected printer. Refer to chapter 0 for more information.
- *Print preview* – shows the upper right plot as it will appear when printed. Refer to chapter 0 for more information.
- *Load data model* – loads a previously saved complete data model in XML format.
- *Save data model* – saves the active data model in an XML format.
- *Exit* – closes LYBIN.

Edit

- Environment – opens the Environment Editor. See section 7.1 for more information.
- Wind Speed – opens the Wind Speed Editor. See section 8.2 for more information.
- Sound Speed – opens the Sound Speed Editor. See section 8.3 for more information.
- Volume Backscatter – opens the Volume backscattering Editor. See section 8.4 for more information.
- Bottom Profile – opens the Bottom profile Editor. See section 8.4 for more information.
- Bottom Type – opens the Bottom Type Editor. See section 8.5 for more information.
- Bottom Backscatter – opens the Bottom back scattering Editor. See section 0 for more information.
- Bottom Loss – opens the Bottom Loss Editor. See section 8.6 for more information.
- Reverberation and noise – opens the Reverberation and noise Editor. See section 0 for more information.
- Ship, Sonars & Self Noise – opens the Sonar and ship-noise Editor. See section 7.1 for more information.

View

- Multipane View – displays the multi-pane view.
- Single Pane View – displays the single pane view.
- History All Modes – displays the plot history for all plot types. This display is described further in section 5.7.

Plot


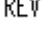

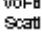

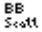
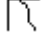








- Compute Plots – computes all plots using the current set of parameter values. Chapter 5 describes the plots in detail.
- Clear Bottom - clears the existing bottom topography and sets the bottom horizontal, with a depth equal to the default value of 280 m.

Help

- About Lybin – displays a window with information about the current version of LYBIN.

4.2 The Toolbar

The toolbar contains icons that are shortcuts to important functions in LYBIN. The icons are shortcuts to the following functions:

- | | |
|---|--|
|  Sonar and Ship-noise Editor |  Reverberation and Noise Editor |
|  Environment Editor |  Volume Back Scattering Editor |
|  Wind Speed Editor |  Bottom Back Scattering Editor |
|  Sound Speed Editor |  Target Strength Editor |
|  Bottom Profile Editor |  Compute Plots |
|  Clear Bottom |  Toggle between single and multi view |
|  Bottom Type Editor |  View History |
|  Bottom Loss Editor | |

In addition, the toolbar contains an option to choose between previous plots. A scenario where a user has plotted five plots is displayed in Figure 4.3. The list box to the left gives an option to select a plot directly while the user can step through the plots by clicking on the buttons to the right.

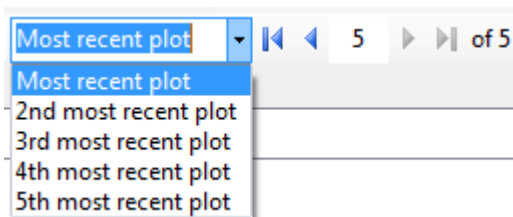



Figure 4.3 Option to choose between previous plots.

4.3 The parameter pane

In multi-pane view mode, the most frequently changed sonar parameters for the acoustic model are displayed in the upper left quadrant of the main screen (see Figure 4.4). Ocean and target parameters, model parameters and display parameters are accessible by selecting one of the other tabs inside the quadrant. In single pane view mode the sonar parameters are put in fields above the plotting area. The other tabs are also accessible from this view mode. Chapter 6 gives a description of all parameters available in the settings pane.

Sonar parameters not present here can be altered via the editor for Sonar Self Noise. This editor can be accessed by selecting the *Sonar and Ship-noise Editor* alternative from the *Edit* menu or by clicking the  icon. Section 7.1 gives a thorough description of how to set parameters in this editor.

Shaded or grey input fields indicate that these fields are not valid for input in the set context. White input fields indicate that these fields are valid for input. Yellow input fields indicate that the field is still in editing mode and the return key or the tab key has to be pressed to update the value, see Figure 4.5.

When a parameter has been modified, the compute button must be clicked or *Compute Plots* selected from the *Plot* menu, to generate a new plot. Note that changes made to the sonar parameters without computing plots, are not saved and loaded the next time the program is started, if the parameter *Customize* is checked. If the same data is to be used in later program runs, the Sonar Editor must be used to store the sonar description in a file (see Section 7.1 for more information). An alternative is to save the data model using *Save Data Model* from the *File* menu.

The settings pane can be changed to display the environment plot, see Figure 4.6. This plot visualises the environment parameters in the same way as they are interpolated in LybinCom. The environment parameters can be set in the Environment Editor described in section 7.1.

Figure 4.4 The upper left Sonar parameters tab. This is an easy access to the most commonly changed parameters.

Figure 4.5 Input boxes turn yellow while editing. When the background returns to white, the change is accepted.

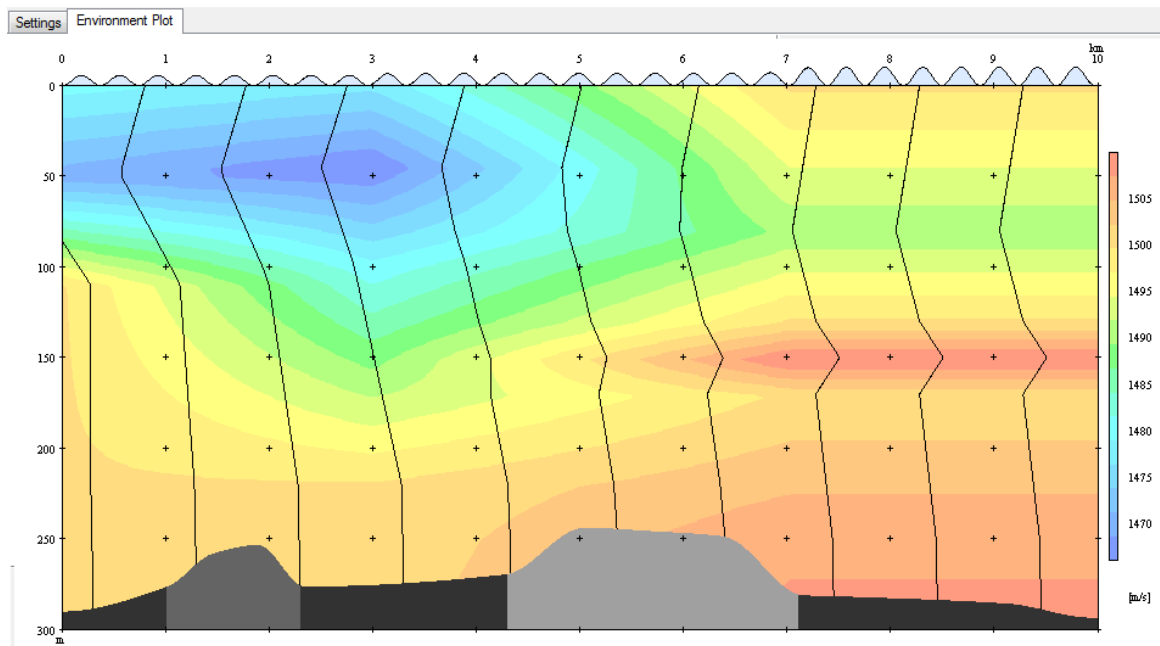



Figure 4.6 The environment plot accessed from the main screen. This plot displays the range dependent environmental properties. On top, the wave height is illustrated as blue waves. The colouring illustrates the sound velocity, along the profiles drawn with 1 km steps. The bottom profile is coloured by bottom type. Moving the mouse pointer over any of the colourings will reveal the values of the underlying data.

4.4 Plotting

The computation of plots is controlled by the *Compute Plots* item on the *Plot* menu or the icon on the toolbar . All available plots, i.e. ray trace, transmission loss, probability of detection, signal excess and reverberation curves, are computed each time a computation is selected. The three plot panes can be used to display any of these calculated plots.

The history can be scrolled through by clicking on the arrow buttons in the toolbar, see Figure 4.3. All parameters that were used to compute the currently displayed plot are restored. In this way, the parameters can be retrieved for a specific case, and editing on these parameters continued. To display an overview of the last plots generated, click

View --> History All Modes

Section 5.7 describes the History All Modes display, and chapter 5 describes the various plots in detail.

4.5 Use of context menus and tooltips throughout the application

Context menus are used throughout the application. These menus are displayed when an object is right-clicked. All plots can be copied by right-clicking on a plot and selecting “Copy to Clipboard”. All input boxes gives context menus with various options for editing.

All input parameters have a tooltip with information about the parameter. The tool tip is displayed when the mouse cursor hovers over the input box, without clicking on it, as seen in Figure 4.7.

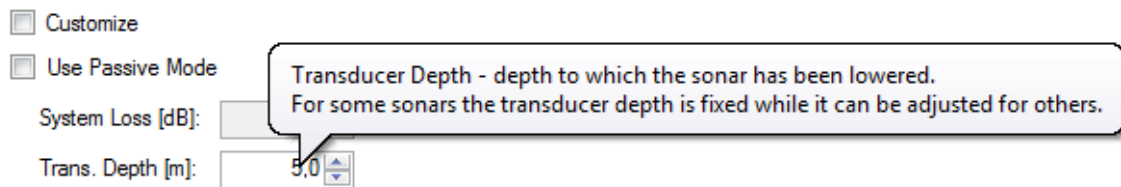


Figure 4.7 The mouse cursor hovers over the transducer depth input box, and a tooltip with information about the parameter appears.

5 Description of the various plots

This chapter describes how to interpret the plots.

5.1 Ray trace

The ray trace diagram illustrates how the sound propagates from the source. Only rays initiated within the sonar main lobe is shown. In order to demonstrate typical ray paths, the scattering at the sea surface is disregarded. An example of a ray trace diagram is shown in Figure 5.1.

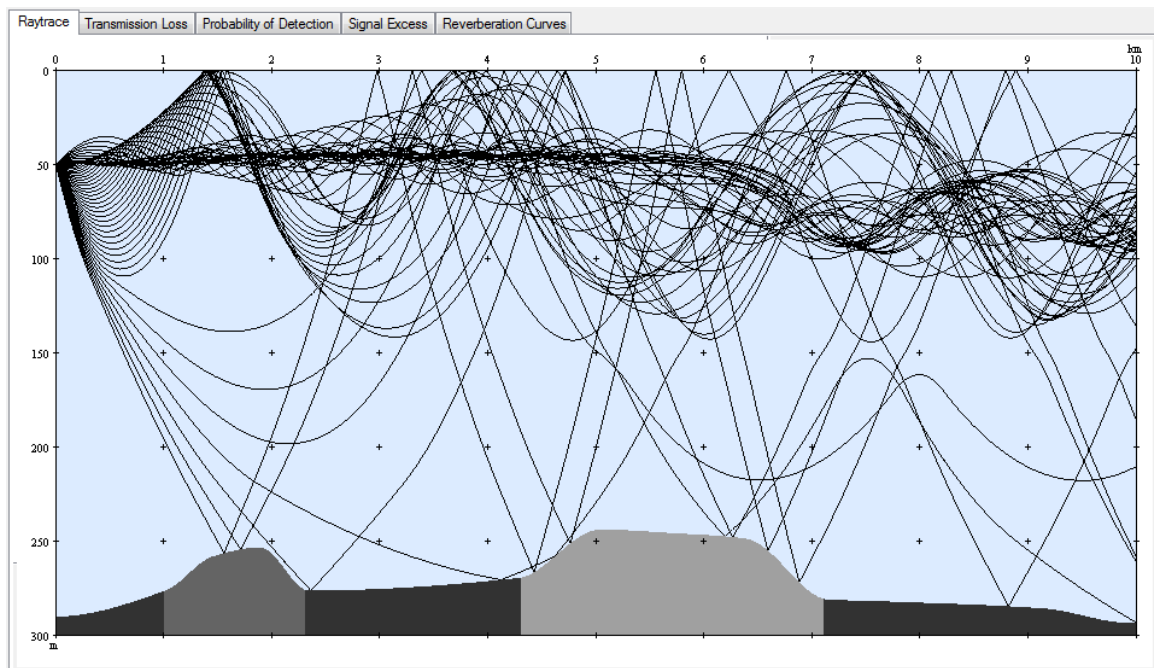


Figure 5.1 The ray trace plot displays a defined number of the sound's travel paths. These paths are calculated based on the given sonar parameters and the environment data.

5.2 Transmission Loss

The transmission loss plot graphically illustrates the loss of intensity the sound suffers as it travels within the area spanned by the range and depth axes. Figure 5.2 gives an example of a transmission loss plot.

Transmission loss may be considered to be the sum of the loss due to spreading and the loss due to attenuation. Spreading loss is a geometrical effect representing the weakening of a sound signal as it spreads outwards from the source. Attenuation loss includes the effects of absorption and scattering. The estimation of the transmission loss is based on intensity computations for a user-defined number of rays.

To read the plot, use the colour coding. To determine the transmission loss at an arbitrary position in the plot, search for the colour of that location in the colour coding. The value of the intensity loss (dB) is written above this colour.

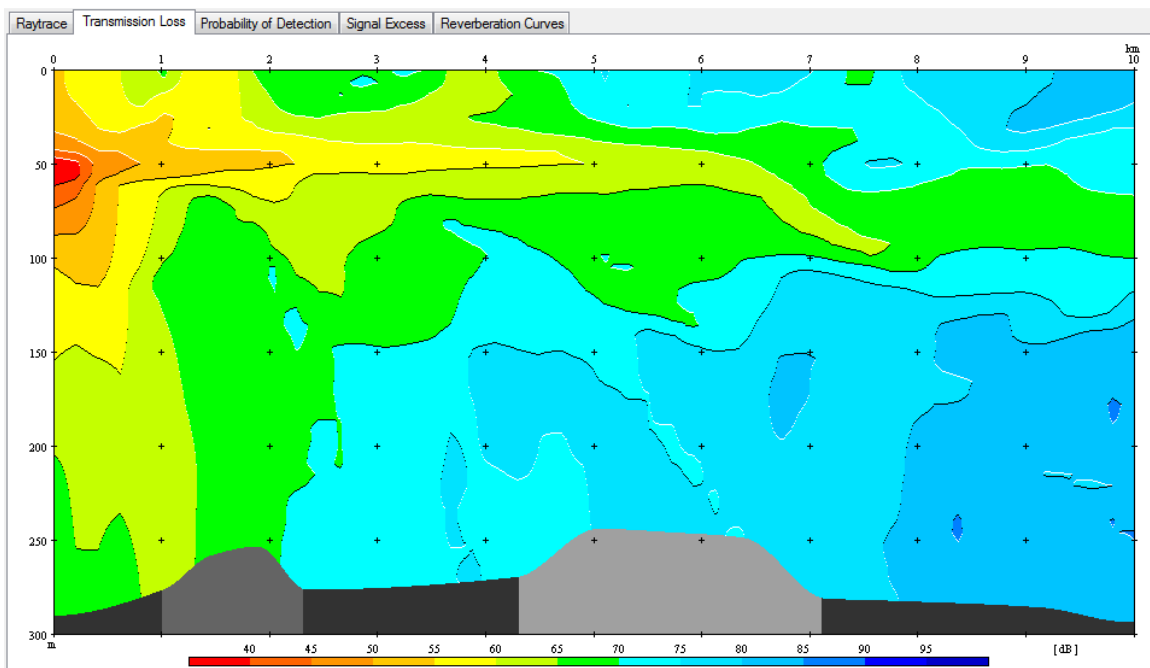


Figure 5.2 The transmission loss plot displays the loss of intensity due to spreading and attenuation in a cross-section of the water volume.

Here is a brief overview of the loss mechanisms LYBIN takes into account:

Cylindrical spreading - the intensity loss of a ray segment depends on the horizontal distance travelled by the ray from the source.

Vertical spreading - given by the vertical density of rays.

Bubble attenuation - wind and breaking waves create a layer of air bubbles near the sea surface. Sound rays passing through this layer suffer an energy loss depending on the incoming angle. Small grazing angles imply lengthy paths through the bubble layer and hence greater losses. The attenuation of the sound is strongly frequency dependent: negligible at low frequencies, but significant close to the bubble resonance frequency around 55 kHz.

Bottom loss - is estimated using empirical data for a set of predefined bottom types. Refer to 8.5 for how to set the bottom type. The loss is a function of bottom type and grazing angle. Predefined angles and corresponding losses are stored in LYBIN. The bottom loss can also be given directly to LYBIN as an input parameter, as described in 8.6.

Thermal absorption - conversion of the elastic energy of a sound wave into heat. This results in a heating up of the medium. Takes into account boric acid relaxation, magnesium sulphate relaxation and viscosity.

Scattering – not by itself a loss mechanism, but the results of scattering can be measured as loss of energy. Unlike several other models which treat scattering as a loss, LYBIN attempts to simulate the scattering process itself. When a sound ray hits the surface, it is reflected. Due to ocean waves, the reflection is not necessarily specular. Scattering refers to the fact that the reflection angle is somewhat random.

5.3 Reverberation Curves

The reverberation curves plot graphically illustrates the calculated reverberation from the sea surface, the water volume, and the sea bottom. The total noise level, calculated from ambient and self noise, is also included in the plot. Total reverberation is the sum of all the reverberation from the surface, volume and bottom. The masking level is the sum of all reverberation and noise present.

Both the reverberation and noise are plotted in dB/ μ Pa as a function of distance from the sonar. Noise is shown in green, the surface reverberation in blue, the volume reverberation in orange, the bottom reverberation in brown, the total reverberation in black and the total

masking level is shown in magenta. Figure 5.3 gives an example of the reverberation curves plot.

To read the plot, use the colour coding. To determine the reverberation at an arbitrary distance in the plot, find the distance and locate the curve of interest. The value of the reverberation (dB/ μ Pa) is read from the axis to the left.

Reverberation and noise levels are estimated differently for the CW (continuous wave) and FM (frequency modulated) pulses; see section 6.1.1 for more details on the two available pulse types. The difference lies in the processing gains. In the case of an FM pulse the reverberation and noise levels are reduced by $10\log_{10}(BT)$, where B is the frequency bandwidth and T is the pulse length, see section 6.1.1. The CW pulses are estimated according to reverberation zone; see section 6.2.1 for more information about the different zones.

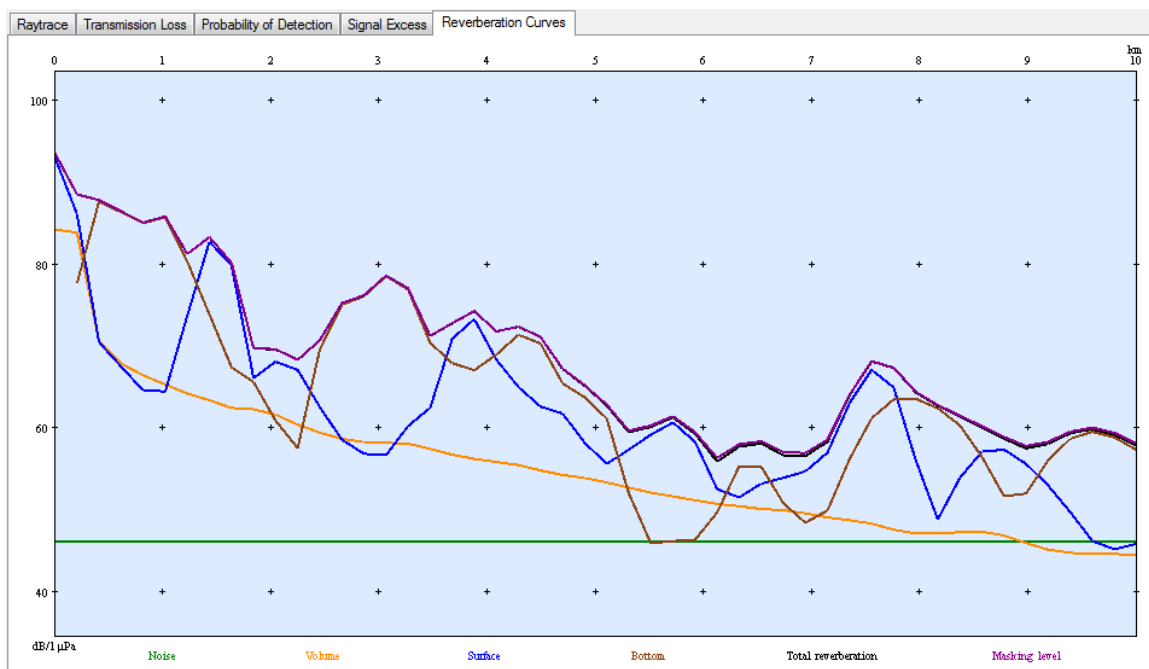


Figure 5.3 The reverberation curves plot displays the calculated reverberation from the sea surface (blue), the water volume (orange) and the sea bottom (brown). The total reverberation is seen as the black line. The total noise level (green), calculated from ambient and self noise, is also included in the plot. The total of noise and reverberation is included as the masking level (magenta).

5.4 Signal Excess

The signal excess plot graphically illustrates the estimated signal level for a target at any range and depth in the calculated area. The signal excess is calculated on the basis of target echo strength, detection threshold, calculated transmission loss, reverberation and noise. An example of a signal excess plot is shown in Figure 5.4.

To read the plot, use the colour coding. To determine the signal excess for an arbitrary position in the plot, search for the colour of that location in the colour coding. The value of the signal excess (dB) is written above this colour.

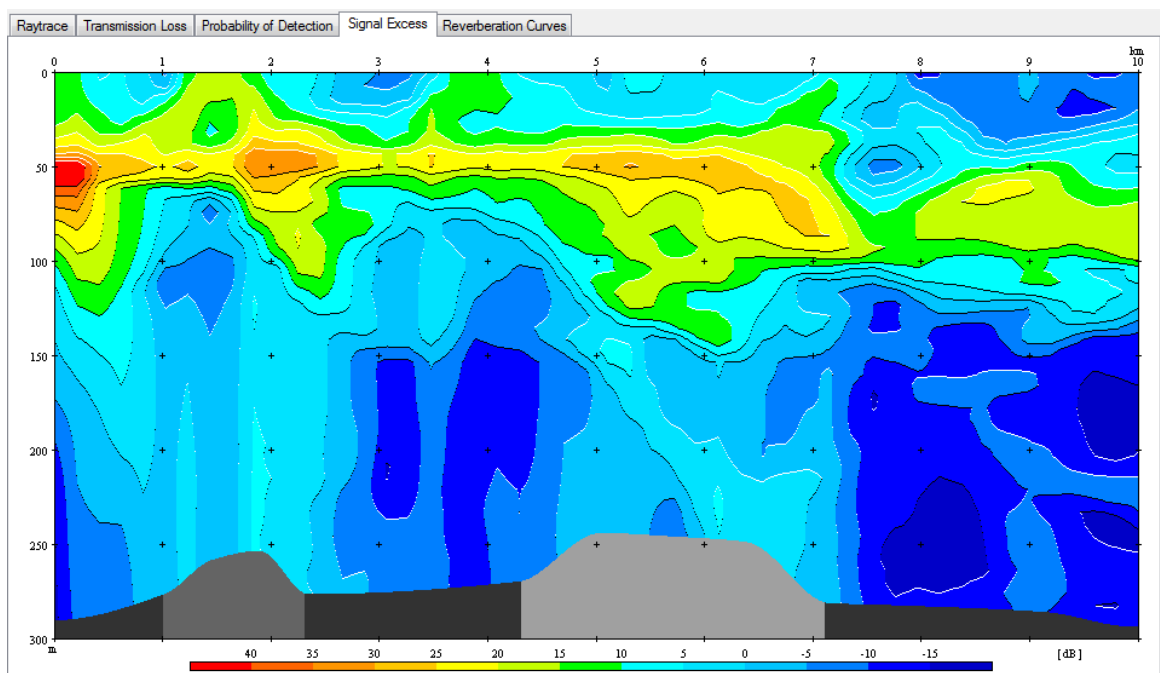


Figure 5.4 The signal excess plot displays the remaining part of the signal, after target strength is added and transmission loss, reverberation, noise and detection threshold is subtracted, in a cross-section of the water volume .

5.5 Probability of detection

The probability of detection plot graphically illustrates the probability of finding an object with a given target strength within the area spanned by the range and depth axes. Figure 5.5 gives an example of a probability of detection plot.

The estimation of probability of detection is based on the results from the transmission loss, noise and reverberation estimation. The sonar equation is used to calculate the signal excess, and the probability of detection is derived accordingly.

To read the plot, use the colour coding. To determine the probability of detection at an arbitrary position in the plot, search for the colour of that location in the colour coding. The value of the probability of detection (%) is written above this colour.

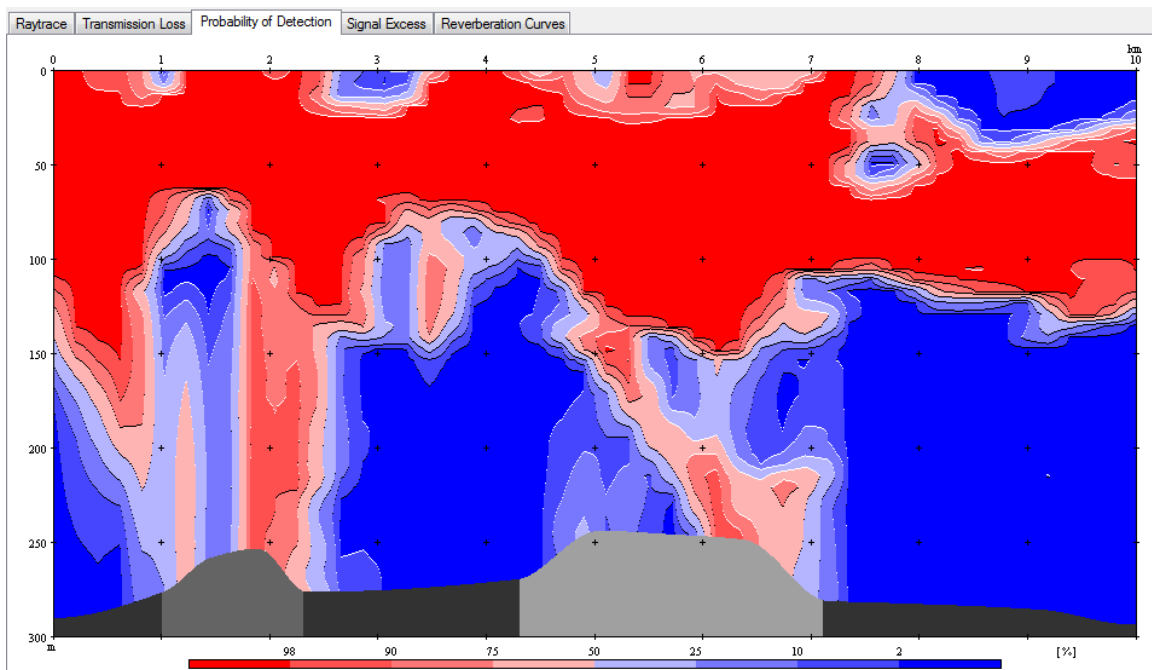


Figure 5.5 The probability of detection plot displays the probability of detecting a target with a given echo strength under the given sonar and environmental conditions. It is assumed a 50 % probability of detection at a signal excess of 0 dB.

5.6 Environment plot

The environment plot will give the user an overview of the environment parameters as they are interpolated and used in the calculations. The plot is placed next to the settings tab in the

main screen. The Environment Editor, described in section 6.1, displays the same plot but, the parameters there are not interpolated. In addition the Environment Editor gives access to all environmental parameter editors. Figure 5.6 gives an example of the Environment plot.

The environment plot shows all the environment parameters as they are interpolated and used in the calculations. At the top of the plot, waves illustrate the given wind speed or wave height. The height of each wave corresponds to the value at that range. The sound speed is graphically illustrated with colour codes in the water volume. Red indicates hot water and high sound speed, while blue represents cold water, and thus low sound speed. The bottom topography is shown at the bottom of the plot with different shadings in grey indicating sediment type.

The actual value at each range and depth can be found by holding the mouse cursor over the environment plot. The position and parameter value are then displayed below the plot, as shown for the sound speed at range 5605 m and depth 186 m in Figure 5.6.

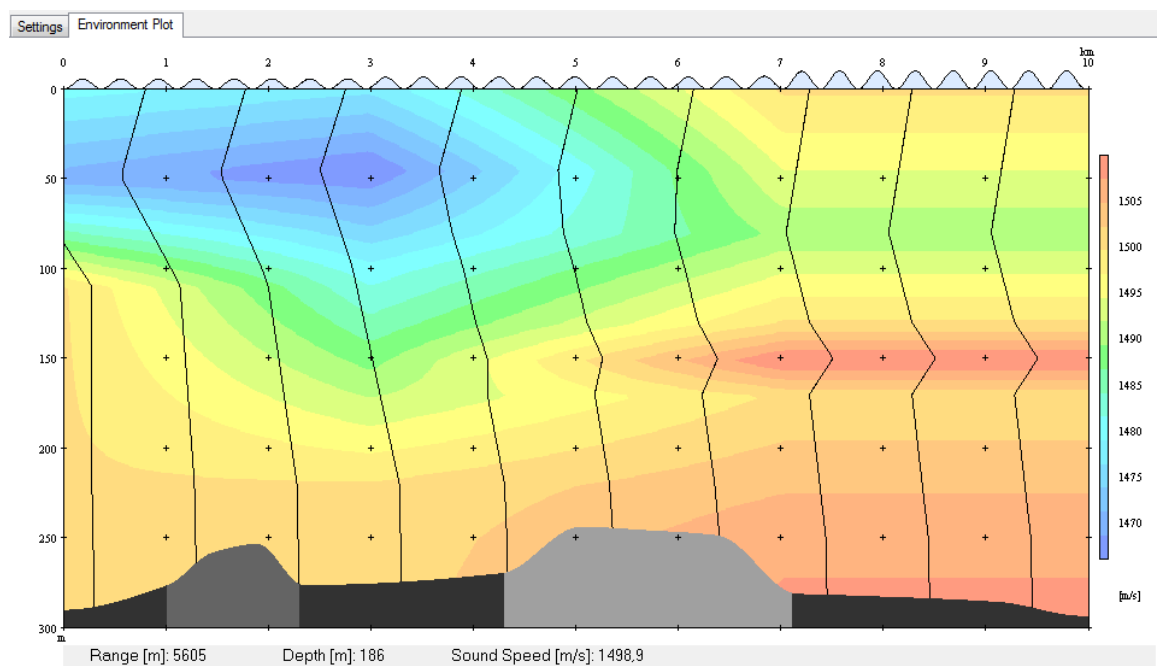



Figure 5.6 The environment plot displays the range dependent environmental properties. On the top, the wave height is illustrated as blue waves. The colouring illustrates the sound velocity, along with the profiles drawn with 1 km steps. The bottom profile is coloured by bottom type. Moving the mouse pointer over any of the colourings will reveal the values of the underlying data.

5.7 Plot History

To display an overview of the last plots generated, click

View --> History All Modes

or click the icon .

An example with plots for the last 6 calculations is displayed in Figure 5.7

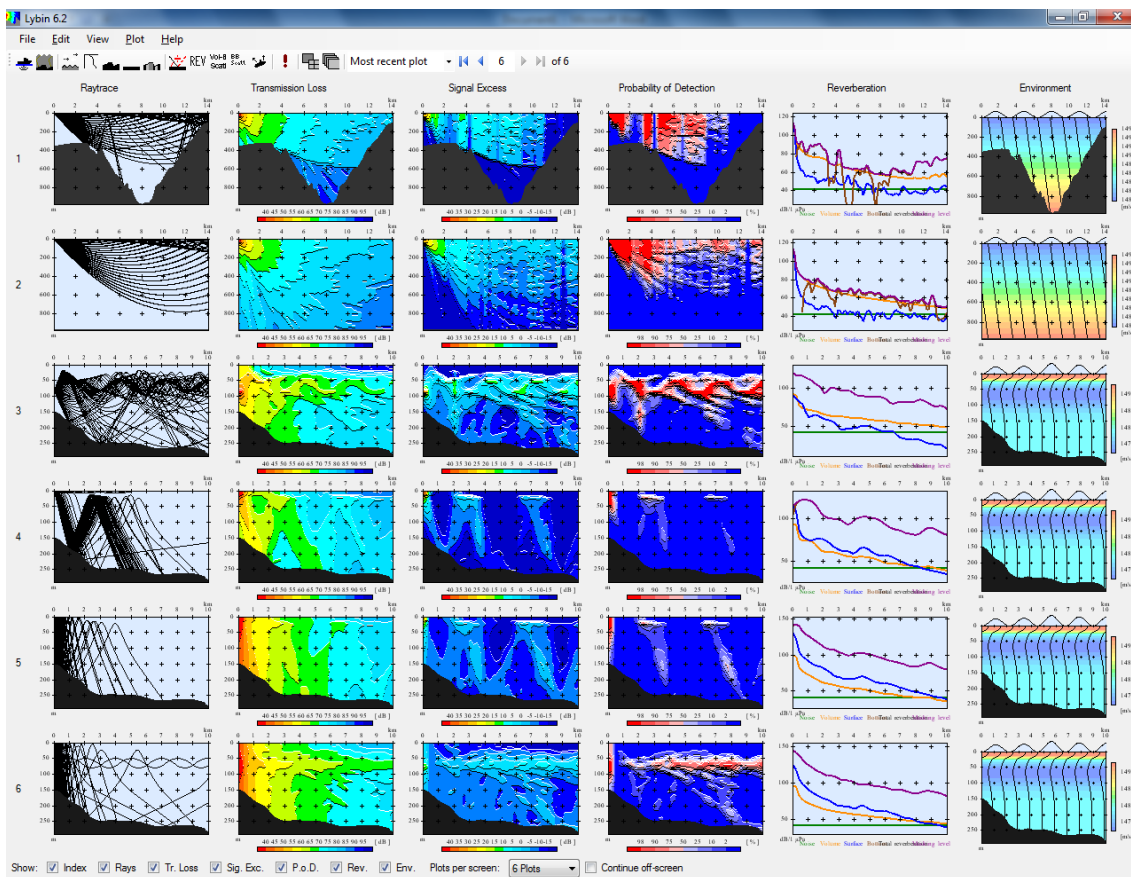



Figure 5.7 The history window displays a selected number of previously calculated results. Which results to display may be changed by the user. The figure displays a screenshot where the user has chosen to display all results and the environment for the last six calculations.

There are control parameters located at the bottom of the screen:

- To remove the index number to the left, uncheck the checkbox *Index*.
- To remove the ray trace plots, uncheck the checkbox *Rays*.
- To remove the transmission loss plots, uncheck the checkbox *Tr. Loss*.
- To remove the signal excess plots, uncheck the checkbox *Sig. Exc*.
- To remove the probability of detection plots, uncheck the checkbox *P.o.D*.
- To remove the reverberation curves plots, uncheck the checkbox *Rev*.
- To remove the environment plots, uncheck the checkbox *Env*.
- To control how many plot calculations to be displayed, select the desired value from the listbox *Plots per screen*. The value *Fit All* will find the best fit for all calculations performed in a window.
- If there are more calculations performed than displayed on the screen, the checkbox *Continue off-screen* can be checked to enable scroll-down functionality.

To go back to the main screen, click

View --> Multipane view/Single Pane view

or click the icon .

6 Entering parameters from the main screen

This chapter describes the parameters available from the Settings tab on the main screen. For more detailed description of the parameters and their effects on sonar performance, please refer to [8].

6.1 Sonar settings

The sonar parameters available for both active and passive sonar are:

- Sonar - name of the current sonar. The list of available sonars is displayed by clicking on the arrow down button to the right. By default, only the default sonar is available. New sonars can be added either by using the Sonar Self Noise editor described in section 7.1 or by importing a data model using the option in the *File* menu.

Figure 6.1 The sonar settings available for active sonar contain the most commonly changed parameters for active sonar. If the sonar is specified with all available modes, the modes can be selected in the "Mode" selection box. If that is not the case, the user may check the "Customize" box to freely change any parameters of choice.

- *Customize* – allows the user to quickly set up a customized sonar. When checked, all sonar parameters displayed here are open for input.
- *Use Passive Mode* – lets LYBIN run computations for passive sonar. When checked, fields for passive sonar are displayed (see Figure 6.2). The Transmitter part of the Transmitter/Receiver settings is also locked for input.
- *Calibration Factor* – this parameter is a calibration factor that is not yet implemented but is displayed on the GUI for future use.
- *Detection Threshold* – the strength of the signal relative to the masking level necessary to see an object with the sonar. The threshold can range from -100 dB to 100 dB.

-
-
- *System Loss* - system loss due to special loss mechanisms in the sea or sonar system not otherwise accounted for.
 - *Trans. Depth* - depth to which the sonar has been lowered. For some sonars the transducer depth is fixed while it can be adjusted for others. The parameters describing whether the depth is fixed or in which depth range the sonar is to operate are set in the Sonar Editor described in section 7.3. The field for transducer depth available from the main screen is therefore dependent on these parameters. The transducer depth ranges from 0.1 to 12,000 meters.
 - *Tilt Angle Transmitter* - current angle of the transmitting part of the sonar beam centre, measured from the horizontal. Positive degrees go upwards and negative downwards from 90 to -90 degrees. The parameters describing whether the tilt is fixed or in which tilt range the sonar is to operate are set in the Sonar Editor described in section 7.3. The field for Tilt Angle available from the main screen is therefore dependent on these parameters.
 - *Tilt Angle Receiver* - current angle of the receiving part of the sonar beam centre, measured from the horizontal. Positive degrees go upwards and negative downwards from 90 to -90 degrees. The parameters describing whether the tilt is fixed or in which tilt range the sonar is to operate are set in the Sonar Editor described in section 7.3. The field for Tilt Angle available from the main screen is therefore dependent on these parameters.
 - *Beam Width Transmitter* - vertical opening of the beam of the transmitting part of the sonar. There is a higher concentration of rays within the beam width, in the direction around the tilt angle. The beam width can range from 1-360 degrees.
 - *Beam Width Receiver* - vertical opening of the beam of the receiving part of the sonar. There is a higher concentration of rays within the beam width, in the direction around the tilt angle. The beam width can range from 1-360 degrees.
 - *Side Lobe Transmitter* - difference in intensity levels (in dB) between the main lobe and the first side lobes, from 5 to 43 dB. This parameter indicates the suppression of the first side lobe of the transmitting part of the sonar relative to the centre of the beam. High figures give one-beam-only sonars, whereas low figures give visible side lobes.

-
- *Side Lobe Receiver* - difference in intensity levels (in dB) between the main lobe and the first side lobes, from 5 to 43 dB. This parameter indicates the suppression of the first side lobe of the receiving part of the sonar relative to the centre of the beam. High figures give one-beam-only sonars, whereas low figures give visible side lobes.

6.1.1 Parameters specific to active sonar

The following parameters are available when Use Passive Mode is unchecked, i.e. for active sonar:

- *Mode* - name of the current sonar mode. A list of available modes is available by clicking on the arrow down button to the right of the field. By default, only the default mode is available. New modes can be added by using the Sonar Self Noise editor described in section 7.1 or by importing a complete data model.
- *Frequency* - operating centre frequency of the sonar. The frequency can range from 200 Hz to 1 000 000 Hz.
- *Source Level* - the source level of the sonar with the currently selected mode and frequency. The source level (in dB) is the output volume of the sonar, and must be in the range 0 – 500 dB.
- *Directivity Index* - the sonar's ability to suppress isotropic noise relative to the response in the steering direction. The directivity index can range from -100 dB to 100 dB.
- *Pulse* - a field describing the pulse form and length for the defined mode.
- *Envelope Function* - envelope function of the signal. Currently, only "Hann" is available.
- *Filter Bandwidth* – the filter bandwidth of the pulse. The Filter Bandwidth ranges from 0 to 10 000 Hz.
- *FM Bandwidth* – frequency modulation bandwidth of the pulse. Applicable for FM signals only. The FM Bandwidth ranges from 0 to 10 000 Hz.

-
-
- *Pulse Form* - the pulse form of the currently selected pulse. A list of available pulse forms is available by clicking on the arrow down button to the right of the field. Valid values are FM (frequency modulated) and CW (continuous wave).
 - *Pulse Length* - the length (in ms) of the currently selected pulse. Valid pulse lengths are from 0 to 30 000 ms.

6.1.2 Parameters specific to passive sonar

LYBIN can perform calculations also for passive sonar. When the checkbox *Use Passive Mode* is checked, passive sonar setting is displayed. The sonar parameters available for passive sonar only are:

- *Type* – describes whether the sonar is broad or narrowband. Both choices are available by clicking on the arrow down button to the right of the field.
- *Bandwidth* – bandwidth for the passive sonar. The Bandwidth ranges from 0 to 10000 Hz.
- *Frequency* – centre frequency for the passive sonar.
- *Integration Time* – integration time for the passive sonar. The valid values range from 0,001 ms to 100 s.
- *Calculate Processing Gain* – when checked LYBIN calculates passive processing gain according to given sonar type, bandwidth, directivity index and integration time.
- *Set Processing Gain* – when checked it allows the user to set the passive processing gain directly.
- *ProcessingGain* – the value (in dB) of the processing gain, either set by the user or calculated by LYBIN.

The screenshot shows a software interface for configuring sonar settings. At the top, there are four tabs: 'Sonar', 'Ocean & Target', 'Model Parameters', and 'Display'. The 'Ocean & Target' tab is selected. Below the tabs, the 'Sonar' section is set to 'Custom sonar'. There are two checked checkboxes: 'Customize' and 'Use Passive Mode'. The 'Calib. Factor [dB]' is set to 0.0, 'System Loss [dB]' is 0.0, 'Detect. Thresh. [dB]' is 10.0, and 'Trans. Depth [m]' is 5.0. A 'Transmitter/Receiver settings' box contains three rows of settings for both Transmitter and Receiver: 'Tilt Angle [deg]' (4.0), 'Beam Width [deg]' (17.0), and 'Side Lobe [dB]' (11.0). The 'Passive Sonar Settings' box includes a 'Type' dropdown set to 'Narrow-band', 'Bandwidth [Hz]' (100.0), 'Frequency [Hz]' (800.0), 'Integration Time[s]' (1.0), and 'ProcessingGain [dB]' (0.0). There are two radio buttons for 'Calculate Processing Gain' (selected) and 'Set Processing Gain'.

Figure 6.2 The sonar settings available for passive sonar contain the most commonly changed parameters for passive sonar. The user can check the "Customize" box to freely change any parameters of choice.

6.2 Ocean and Target

LYBIN provides an option to set various ocean and target parameters prior to calculation as shown in Figure 6.3.

6.2.1 Setting target parameters

The ocean and target parameters available are:

- *Target Strength* – echo which is returned from the target. A value of -15 means that the intensity reflected from this particular target is 15 dB less than the incoming signal. This parameter is used in the sonar equation for active sonars.
- *Aspect Angle* – The aspect angle of the target, seen from the sonar platform.

- *Source Level* – this is the source level of the target. This parameter is only used in calculations for passive sonars.
- *Reverberation Zone* – the zone that the target is within, relative to the ship. There are three reverberation zones:
 - *Main lobe* - represents the case where the target is within the main lobe of the sonar, and the target's Doppler speed is lower than the ship's own speed.
 - *Typical* – Typical horizontal side lobe suppression, where the target's Doppler speed is lower than the ship's own speed.
 - *No reverb* - The Doppler speed of the target is equal or higher than the ship's own speed, so the scenario becomes noise limited.

The screenshot shows the 'Ocean & Target' configuration window. It is divided into four main sections:

- Target:**
 - Strength [dB]: 15,0
 - Aspect Angle [deg]: 0,0
 - Source Level [dB]: 150,0
 - Reverberation Zone: Typical
- Water:**
 - pH: 8,0
 - Default salinity [ppt]: 35,0
- Platform / Own Ship:**
 - Name: (empty text box)
 - Self Noise [dB]: 50,0
 - Self Noise Passive [dB]: 50,0
 - Ship Speed [knots]: 10,0
- Miscellaneous:**
 - Ship Density: 4,0
 - Precipitation Noise Type: None
 - Ambient Noise Level [dB]: 50,0
 - Use Surface Scattering:

Figure 6.3 The ocean and target parameters available for editing.

6.2.2 Manipulating the water parameters

- *pH* – pH level in the sea water.
- *Default salinity [ppt]*- Default value for the salinity in the water can be set here. The parameter is to be used when the sound speed and temperature profiles available don't have any salinity measurements.

6.2.3 Setting platform parameters

The parameters in the Platform / Own Ship group box are not editable. They only reflect the parameter settings in the Sonar Self Noise editor described in section 7.1.

- *Name* – Name of the ship
- *Self Noise* - The ship's in beam and in band self noise in the direction of the current simulation.
- *Self Noise Passive* – The ship's in beam and in band self noise in the direction of the current simulation. This parameter is used in calculations for passive sonar.
- *Ship Speed* – The current ship speed in knots.

6.2.4 Manipulating the miscellaneous parameters

- *Ship Density* - Density of ship traffic in the area of the calculation. The ship density can vary from 1 (low) to 7 (high).
- *Precipitation Noise Type*– type of precipitation in the area. The valid values are:
 - None
 - Light Rain
 - Heavy Rain
 - Hail
 - Snow

-
-
- *Ambient Noise Level* – noise from ambient sources. If the appurtenant check box is checked, this parameter will override the internal calculation of ambient noise by LYBIN.
 - *Use Surface Scattering* – If checked, the rays hitting the sea surface will be reflected in a manner simulating sea scattering. The amount of scattering depends on the given frequency, the sound speed at the surface and the wind speed. If not checked, the rays hitting the sea surface will be reflected specularly as from a perfectly smooth surface.

6.3 Model Parameters

LYBIN provides an option to set various model parameters prior to calculation, as seen in Figure 6.4.

- *Signal Excess Constant* – This parameter can be used to adjust the relation between signal excess and probability of detection. At the moment, this parameter is not editable in LYBIN.

6.3.1 Setting range and depth resolution

The calculation resolution is controlled by the parameters described in this section. The range and depth scales set here mark the border around the calculation. The calculation results are divided into calculation cells, and are the basis of the graphical plots in LYBIN.

The internal ray tracing is based on an additional detailing level, called steps. As default, the number of range steps is 10 times the number of range cells, and the number of depth steps is 20 times the number of depth cells. To avoid too large steps, there is a maximum range step size of 50 meters, and a maximum depth step size of 5 meters. If this step size is exceeded, additional range steps are added.

Figure 6.4 The model parameters available. These parameters control the resolution of the calculation. If the environmental data has high resolution, the resolution of the calculations may be increased.

The following parameters are available to control range and depth resolution:

- *Scale* – Maximum range or depth in the calculation area.
- *# Cells* – Number of calculation output cells in depth or range.
- *Cell Size* – Size of calculation output cell, given in meters.
- *# Steps* – Number of calculation steps to be used during the internal calculation in LYBIN.

All these parameters cannot be set independently at the same time. The calculation resolution would then be over determined. The free parameters help you avoid this. Within each group box of free parameters (one for range and one for depth), only one combination of parameters can be chosen. Each alternative opens the appurtenant resolution parameters for editing.

The following combinations of resolution parameters can be set:

- *Scale and # Cells* – Maximum range/depth and a specific number of cells.
- *Scale and Cell Size* - Maximum range/depth and a specific cell size.
- *Scale and # Steps* - Maximum range/depth and a specific number of calculation steps.

-
-
- *Cell Size and # Steps* – A specific cell size and a specific number of calculation steps.

6.3.2 Manipulating transmission loss rays

The transmission loss rays are the rays that are used in the calculation of transmission loss, and thereby form the basis of all the other calculation results in LYBIN. The transmission loss rays are spread in all directions, according to a density pattern given by the sonar characteristics.

The parameters affecting the transmission loss rays are:

- *Number of rays* – Number of transmission loss rays.
- *Max boarder hits* – Maximum allowed hits at each boarder, e.g. surface and sea bottom. At the moment, this parameter is not editable in LYBIN.
- *Termination Intensity* – The lowest possible intensity a ray can have before it is terminated. At the moment, this parameter is not editable in LYBIN.

6.3.3 Manipulating visual rays

The visual rays are the rays graphically displayed in the ray trace plot as seen in Figure 5.1. These rays are meant to illustrate the rays with the most energy, thus only rays initiated within the sonar main lobe are shown.

The following parameters are available to manipulate the visual rays:

- *Number of Rays* – Number of visual rays in the ray trace plot.
- *Max surface Hits* – Maximum number of surface hits in the ray trace plot.
- *Max Bottom Hits* – Maximum number of bottom hits in the ray trace plot.

6.3.4 Using calculation switches

In situations where there are multiple choices of how to perform a calculation, or which sub-model to use, these choices are made through calculation switches.

The calculation switches available are:

- *Rev and noise calculation type* – Control the calculation of bottom reverberation values. There are four possible choices:
 - *Bottom types* – Calculate bottom reverberation from bottom types.
 - *Bottom back scatter* – Calculate bottom reverberation from backscatter values. How to add Bottom backscatter data is described in section 0

-
-
- *Measured rev and noise* – Use measured reverberation and noise data in stead of calculation. How to include measured reverberation and noise is described in section 0
 - *Lamberts law* – Use Lamberts rule to calculate the bottom reverberation. This choice is dependent of the *LambertsCoefficient*, which can only be set by loading a complete data model as described in section 4.1.
 - *Use measured bottom loss* – Tells LYBIN how to calculate bottom loss. If *Use measured bottom loss* is checked, LYBIN will use measured bottom loss values. These must be added as described in section 8.6. If *Use measured bottom loss* values is not checked, LYBIN will calculate the bottom loss internally from the given (or default) bottom type.
 - *Use measured target strength*-Tells LYBIN which target strength to use. If *Use measured target strength* is checked, LYBIN will use measured target strength values as given in the *Target Strength Table Editor*.

6.4 Display

LYBIN provides an option to set various display parameters prior to calculation. The display parameters control the colouring of plots, step sizes, axis properties and more. The display tab is seen in Figure 6.5.

The following display parameters are available:

- *Use* – Controls whether each plot can have its own display parameters, or not. The two choices are:
 - *Global display options* – Display parameters do not change from one simulation to the next.
 - *Separate values per plot* – Separate display parameters for each simulation.
- *Transmission Loss Scale* – Change plot colours between multiple colours and greyscale.
- *Probability of Detection Scale* - Change plot colours between multiple colours and greyscale.
- *Signal Excess Scale* - Change plot colours between multiple colours and greyscale.

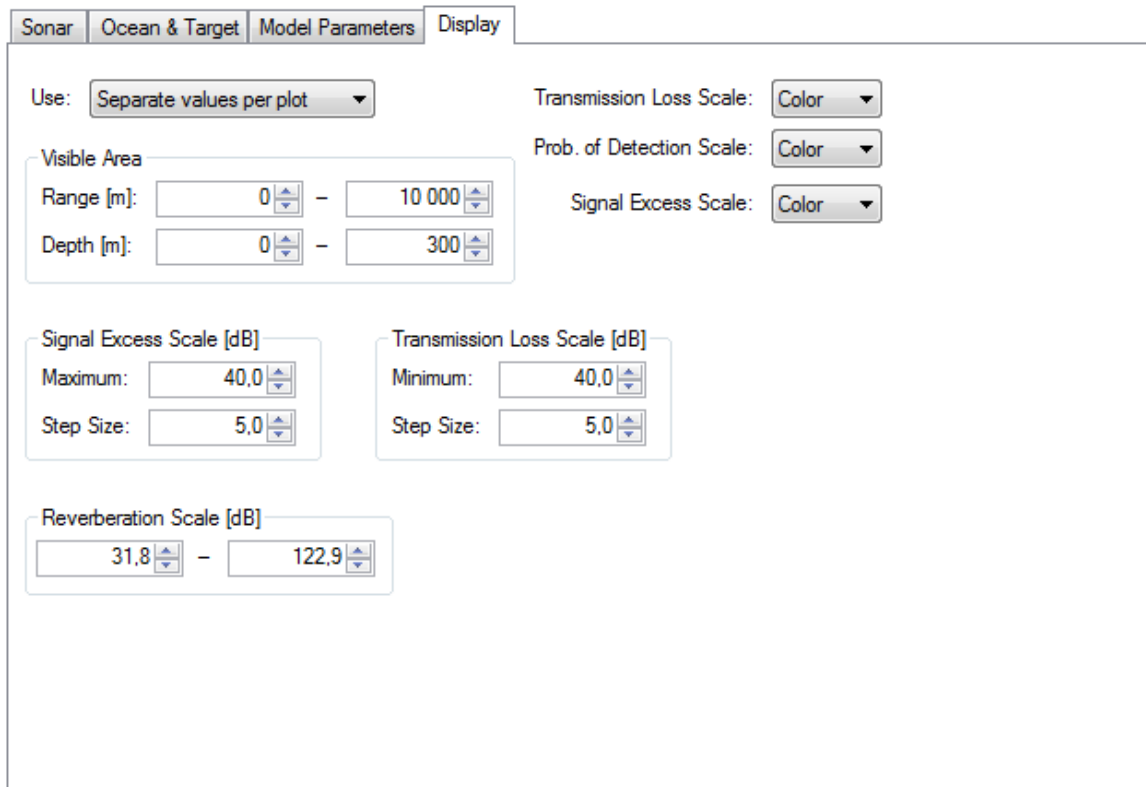


Figure 6.5 The display parameters available. These parameters let the user alter the presentation of the calculation results without altering the results themselves.

6.4.1 Visible Area

The parameters in the *Visible Area* group box control the area displayed in the plots. This area does not have to be the same as the calculation area. The parameters controlling the visible area are:

- *Range* – Minimum and maximum plot range.
- *Depth* – Minimum and maximum plot depth.

6.4.2 Signal Excess Scale

The parameters in the *Signal Excess Scale* group box control the Signal Excess plot as shown in Figure 5.4. The parameters are:

- *Maximum* - Lowest value of the colour representing the highest signal excess.
- *Step Size* - Range in decibels for each colour.

6.4.3 Transmission Loss Scale

The parameters in the *Transmission Loss Scale* group box control the Transmission Loss plot as shown in Figure 5.2. The parameters are:

- *Minimum* – Highest value of the colour representing the lowest transmission loss.
- *Step Size* - Range in decibels for each colour.

6.4.4 Reverberation Scale

The minimum and maximum values of the decibel values in the Reverberation Curves plot are controlled in the Reverberation Scale group box. The lower value is given to the left and the higher to the right. The Reverberation Curves plot is shown in Figure 5.3.

7 Platform editors


The platform editors allows the user to edit all type of information connected to own platform and sonar system.

7.1 Sonar Self Noise

The *Sonar Self Noise* window displays ship parameters given in the *Ship Editor* (see section 7.2) and the *Sonar Editor* (see section 7.3).

The *Sonar Self Noise* window can be invoked by selecting

Edit --> Ship, Sonars & Self Noise

or by clicking the  icon on the toolbar. The window is shown in Figure 7.1.

The editable values in this window – frequency, transducer depth, ship speed, and relative bearing – only affect the noise levels shown in this window. The values used in calculations can be set in the Ship Editor, Sonar Editor, or Sonar Settings tab, as appropriate.

The following parameters are displayed in the *Sonar Self Noise* window:

Ship

- *Name* - the name of the ship.
- *Type* - type or class of ship, for instance “frigate”.
- Edit Ship button – opens the Ship Editor.

Sonar

- *Sonar name* – name or type of the sonar

Sonar Settings

- *Frequency* - the frequency (in kHz) for which the noise level is shown.
- *Transducer Depth* - the transducer depth (in m) for which the noise level is shown.

Other parameters affecting Noise

- *Ship Speed* - the ship speed, in knots, for which the noise level is shown.
- *Relative bearing* - the direction (relative to the ship) for which the noise level is shown. Given in degrees.
- *Wind Speed* – wind speed in m/s.
- *Ship density* – density of ship traffic in the area of the calculation. The ship density can vary from 1 (low) to 7 (high).
- *Precipitation type* - type of precipitation in the area. The valid values are:
 - *None*
 - *Light Rain*
 - *Heavy Rain*
 - *Hail*
 - *Snow*

Noise levels at sonar frequency

- *Ship Noise* – the ship’s in beam and in band self noise at the specified frequency, transducer depth, speed, and relative bearing.
- *Ambient noise* – ambient noise from external sources.
- *Total Noise* – ship and ambient noise combined.

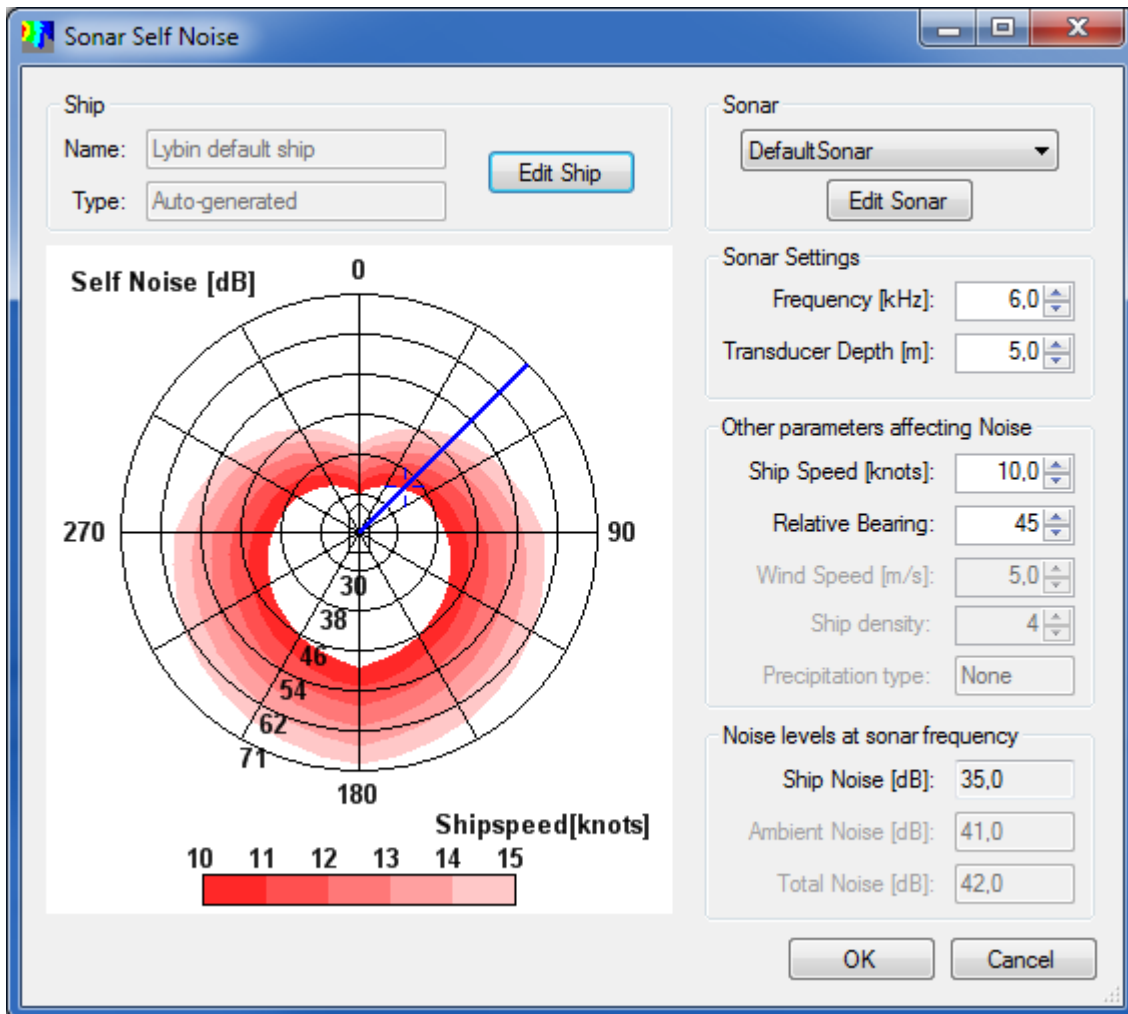


Figure 7.1 The Sonar Self Noise window contains a graphical presentation of the ship self noise. The window also contains buttons to open editors for the ship and sonar parameters.

7.2 Ship editor

The ship editor contains all the relevant information about the platform holding the sonar. The platform is most often a ship, but can also be a helicopter or a buoy.

The *Ship Editor* can be invoked by selecting the *Edit Ship* button in the *Sonar Self Noise* window. The editor is shown in Figure 7.2.

Ship parameters include:

- *Ship name* - the name of the ship.
- *Ship Type* - type or class of ship, for instance “frigate”.
- *Course* - the ship’s course, in degrees, relative to North.
- *Speed* - the ship’s current speed, in knots.
- *Latitude*- the ship’s current latitude, in decimal degrees. North is defined positive.
- *Longitude* - the ship’s current longitude, in decimal degrees. East is defined positive.

Ship Noise data consist of measurements that can be given for a user-defined number of frequencies, ship speeds and sectors (relative bearings). For each of these combinations, the noise measured at different depths can be registered. Use the *Num Sectors* to set the correct number of sectors of ship noise measurements. The sectors are assumed evenly distributed around the ship, so if you have measurements for every 10 degrees, you should set the number of sectors to 36.

Additional information about the noise measurements can be given in the following fields:

- *Ship name* - the ship on which the measurements were done; not necessarily the same as the current ship.
- *Sonar type* - name of sonar type used to perform the measurements.
- *Date* - date of measurements.
- *Latitude*- the ship’s latitude during measurement, in decimal degrees. North is defined positive.
- *Longitude* - the ship’s longitude during measurement, in decimal degrees. East is defined positive.

Several sonars can be associated to a ship. Select the current sonar and use the *Edit Sonar* button to invoke the sonar editor where data for each sonar can be entered (see Section 7.3). The part of the Ship Editor that associates sonars to the ship is shown in Figure 7.3.

You can save the ship data as a file by pressing the *Save* button, find a suitable location for the file and click *Save* again. To load an existing set of ship data, click *Open*, select the file and click *Open* again. Data about the sonars attached to the ship is also stored together with the ship data, so that the next time you load a ship, all of its associated sonars are loaded also.

Click *OK* to accept changes and return to the sonar self noise editor, or *Cancel* to discard changes.

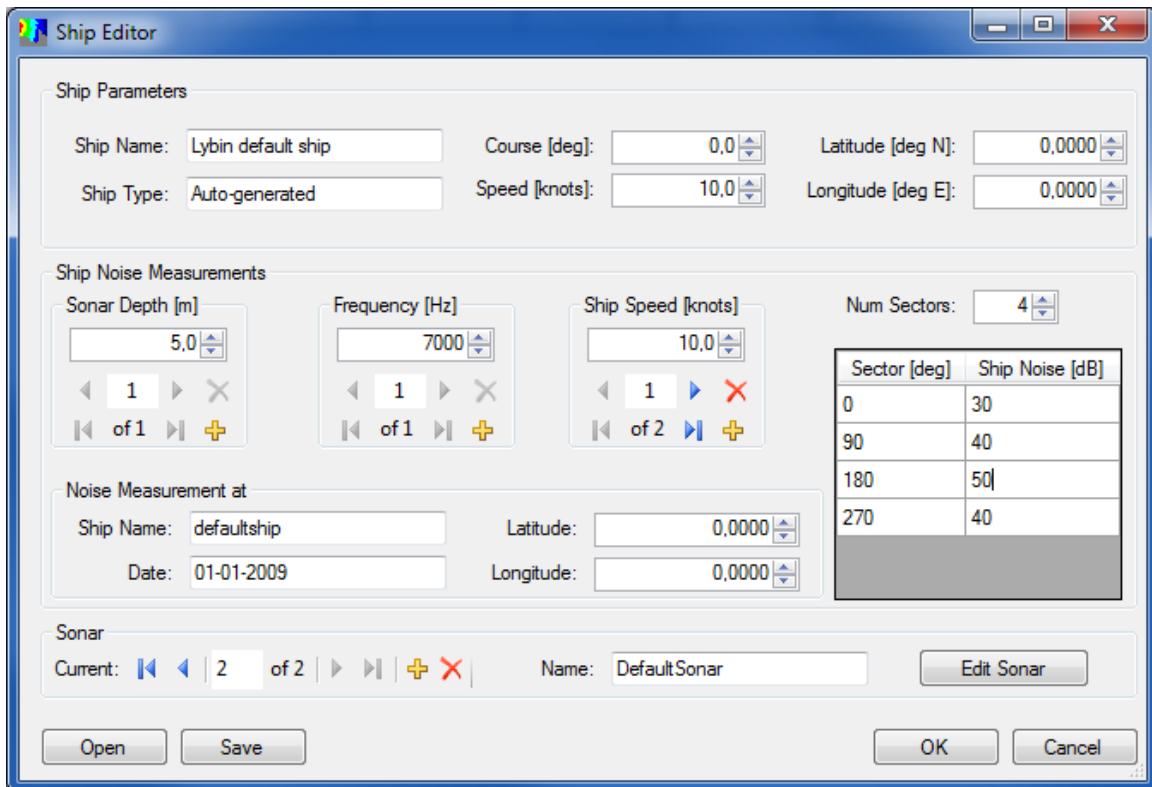


Figure 7.2 The Ship Editor lets the user inspect, alter or create the ship parameters. It is the ship noise profile for various speeds, frequencies and sonar depths that is used in calculations.

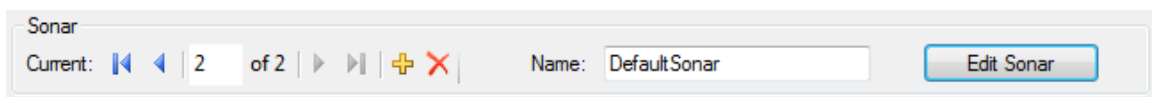


Figure 7.3 Step between the sonars associated with the ship and use the Edit Sonar button to invoke the sonar editor.

7.3 Sonar editor

The Sonar Editor is the editor where one in detail defines parameters for a new sonar. The *Sonar Editor* can be invoked by selecting the *Edit Sonar* button in the *Sonar Self Noise* window, or by selecting the *Edit Sonar* button in the *Ship Editor* Window. The editor is shown in Figure 7.4.

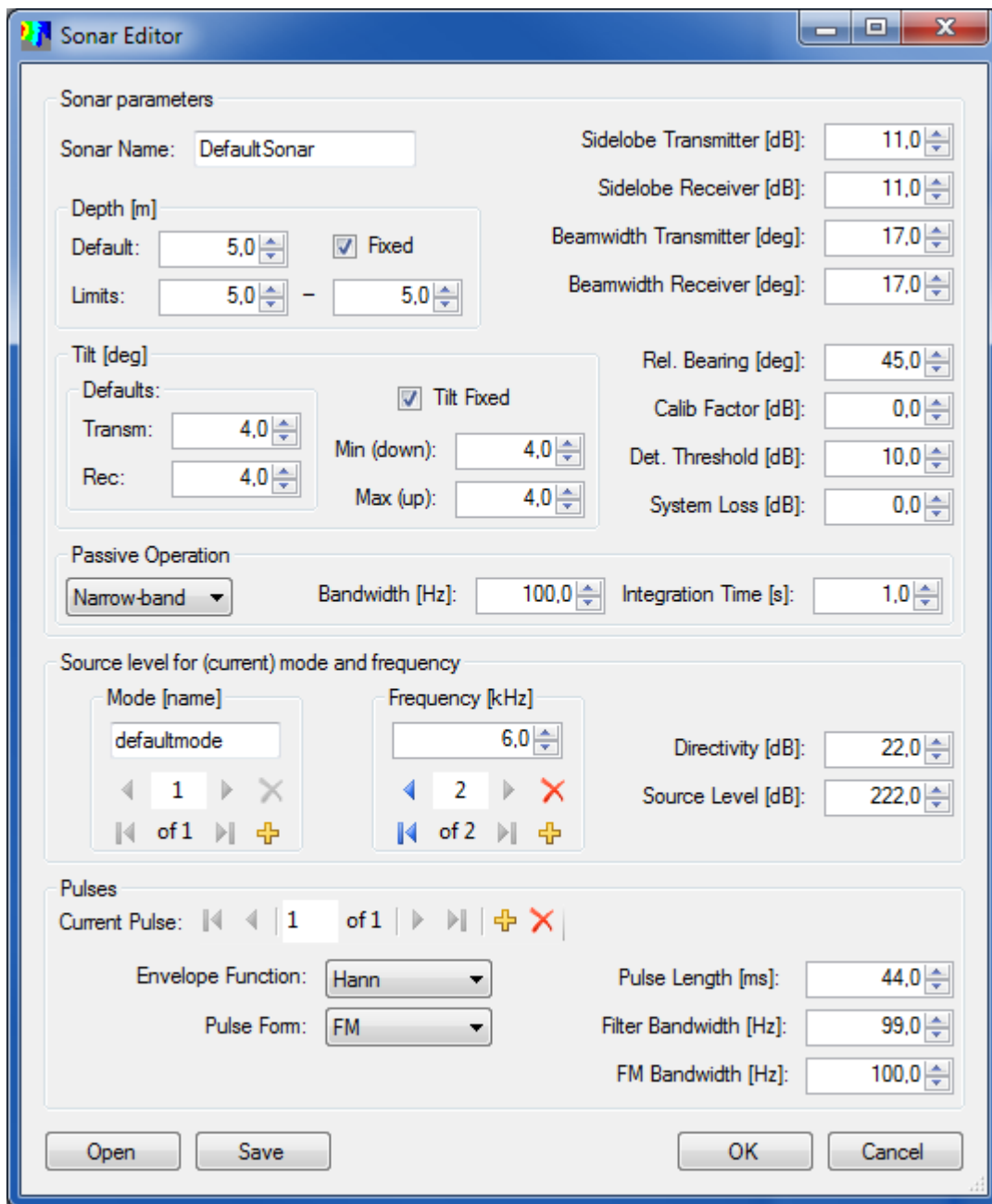


Figure 7.4 The Sonar Editor lets the user view and alter the sonar parameters. The user may also use the editor to create new sonar parameter profiles. By creating a complete sonar parameter file for multiple sonar modes, user experience on a day-to-day basis will be increased.

The following commands are available:

- *Open* - lets the user open a previously saved sonar file. All sonar parameters will be loaded.
- *Save* - lets the user save all parameters for the current sonar as an XML sonar file. Note that this will save the sonar data to a separate XML file. If you want to attach it to a ship, you have to use the *Save* button in the ship editor (see Section 7.2).
- *OK* - uses the defined parameters as data for the current sonar.
- *Cancel* - discards the changes.

Sonar parameters include:

- *Sonar Name* - the type of the sonar.
- *Depth Fixed* - indicates whether the sonar has a variable transducer depth or a fixed transducer depth (i.e. hull mounted sonars).
- *Depth Default* - the fixed depth for fixed-depth sonars. The current depth for variable depth sonars. All depths are in meters.
- *Depth Limits* - the minimum and maximum depth of a variable depth sonar.
- *Tilt Fixed* - indicates whether the sonar has variable tilt angle or a fixed tilt angle.
- *Tilt Transmitter* - the fixed tilt angle for fixed-tilt sonars. The current tilt for variable tilt sonars. Tilts are measured in degrees, positive angles are defined upwards.
- *Tilt Receiver* - the fixed tilt angle for fixed-tilt sonars. The current tilt for variable tilt sonars. Tilts are measured in degrees, positive angles are defined upwards.
- *Tilt Min (down)* - the negative (downward) tilt limit for variable tilt sonars.
- *Tilt Max (up)* - the positive (upward) tilt limit for variable tilt sonars.
- *Sidelobe transmitter* - the vertical sidelobe suppression of the transmitter. The sidelobe suppression indicates the suppression (in dB) of the first sidelobe of the sonar relative to the centre of the beam. High figures give one-beam-only sonars, whereas low figures give visible sidelobes.

-
-
- *Sidelobe receiver* - the vertical sidelobe suppression of the receiver. The sidelobe suppression indicates the suppression (in dB) of the first sidelobe of the sonar relative to the centre of the beam. High figures give one-beam-only sonars, whereas low figures give visible sidelobes.
 - *Beam width transmitter* - indicates the vertical beam width (in degrees) of the transmitter beam.
 - *Beam width receiver* - indicates the vertical beam width (in degrees) of the receiver beam.
 - *Rel. Bearing* - Indicates the direction (relative to the ship) at which the transducer is currently pointing. Given in degrees.
 - *Calib.Factor* - the calibration factor (in dB) gives an opportunity to correct for systematic errors in the Probability of Detection calculations for a certain sonar. It should be set to 0 until evidence shows errors in the PoD calculations. The calibration factor that is not yet implemented but is displayed on the GUI for future use.
 - *Detec.Threshold* - the strength of the signal relative to the masking level necessary to see an object with the sonar.
 - *System Loss* - system loss due to special loss mechanisms in the sea or sonar system not otherwise accounted for.

Some parameters are specific for passive sonar calculations. These are:

- Narrowband / Broadband – type of sonar.
- *Bandwidth* – the bandwidth of the sonar.
- *Integration Time* – integration time during passive mode.

A sonar can have different source levels and directivity indexes for a set of frequencies and modes. These can be edited using the following buttons:

- *Freq* - the current frequency (in kHz).
 - Use the plus sign to select the number of frequencies on this sonar.

-
-
- Use the arrows to select which frequency is currently in use.
 - Use the cross to delete a frequency.

 - *Mode* - name of the current mode.
 - Use the plus sign to select the number of modes on this sonar.
 - Use the arrows to select which mode is currently in use.
 - Use the cross to delete a mode.

 - *Directivity Index* - is the beam pattern's ability to suppress isotropic noise relative to the response in the steering direction.

 - *Source Level* - the source level of the sonar with the currently selected mode and frequency. The source level (in dB) is the output volume of the sonar.

A sonar can have a number of different pulse types. In LYBIN several pulses can be defined, and the parameters for them are edited using the following buttons:

- Use the plus sign to select the number of pulses.
- Use the arrows to select which pulse is currently in use.
- Use the cross to delete a pulse.
- *Envelope Function* - the Envelope Function for the currently selected pulse.
- *Pulse Form* - pulse form of the currently selected pulse. The pulse form can be selected by pressing the arrow down button to get a list of the available pulse forms, which are CW and FM at present.
- *Pulse Length* - the length (in ms) of the currently selected pulse.
- *Filter Bandwidth* - the filter bandwidth (in Hz) of the currently selected pulse.
- *FM Bandwidth* - the FM modulation bandwidth (in Hz) of the currently selected pulse. Note that this value is only applicable to FM pulses. The field will be grayed out if any of the other pulse forms are selected.

Be aware that:

Data about sonars can be stored in separate files, but to attach them to a ship you have to first start the ship editor (see section 7.1) and then launch the *Sonar Editor* from there. When you have finished editing sonar parameters, press the *Ok* button and go back to the ship editor where you save all the ship's data, including the sonar(s), on a ship file by pressing the *Save* button. In this way, the sonar(s) you have defined will be loaded with the ship every time LYBIN is run.

Saving sonar data on a separate file is useful if you are going to attach the same sonar to several ships. Then you can load its definition from the sonar file for each ship, and avoid retyping the same parameters repeatedly.

8 Environment editors

While the parameter settings that can be performed via the main screen can be considered as quick to use and easily accessible, the parameter editors offer in-depth specification of model parameters. The parameter editors are described below.

LYBIN is able to handle range dependent environments. In LYBIN, range dependent environmental data is specified for certain range intervals from the sonar. When the environmental properties are entered for a discrete set of locations (ranges), LYBIN will create values at intermediate ranges using interpolation. If no environmental descriptions are given at zero range, LYBIN will substitute the data for the nearest range available, likewise if data at maximum range is missing.

Except for BottomProfile and ReverberationAndNoiseMeasurement, the range dependent data are given with start and stop values to indicate their range of validity. In this context, we call these datasets, with start and stop related to a value (or a set of values), for range dependent data. A range dependent dataset can contain one or more values with their range of validity. The possible number of values to be used in the calculation is only limited by the calculation accuracy.

The start and stop functionality provides great flexibility in defining the environmental range dependent properties. By setting start equal to stop, the data will be considered to belong to a point in space, and LYBIN will use interpolation to produce data for intermediate ranges points. The start and stop functionality might be utilized to illustrate meteorological or oceanographic fronts, entering ranges with finite ranges of validity to each side of the front, and separating the sets by any small distance, across which the conditions will change as abruptly as the user intends. In between these two extreme choices, any combination of these can be used.

The user is responsible for ensuring that the ranges of validity do not overlap. If they do overlap, the calculation kernel LybinCom, uses the first profile until its end range.

8.1 Environment editor

The environment editor shows all the environmental input in one single plot, as can be seen in Figure 8.1. The Environment Editor can be invoked by selecting

Edit --> Environment

or by clicking the  icon on the toolbar.

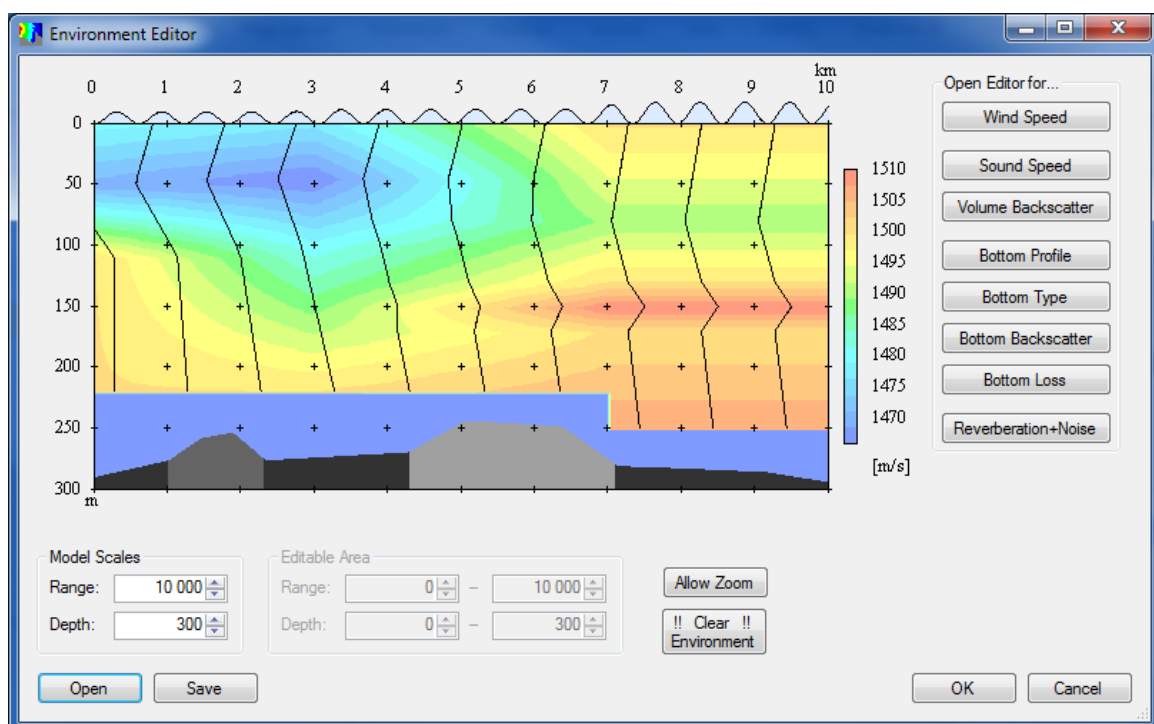


Figure 8.1 The Environment Editor contains all editors for environmental input data. It also includes a representation of the most basic profiles, including wind, sound speed, bottom profile and bottom type.

The environmental editor has a big picture displaying all the environmental input parameters in one single plot. Wind speed is shown by the waves at the top of the picture. Small waves indicate little wind and larger waves indicate more wind. The sound speed is displayed as profile lines and as colours through the water volume. The colour bar to the right shows the relation between actual sound speed and colour. The sound speed profiles are not interpolated further than the deepest input point, thus the profile lines are not drawn deeper, and the areas deeper than the sound speed input are coloured dark blue. The bottom

topography is shown at the bottom of the picture with different shadings of grey indicating sediment type.

When the mouse is moved over the plot, range and depth are displayed beneath the plot. While the mouse is moved over the waves at the top of the plot, the wind speed at that range is displayed. If the mouse is moved inside the water volume, the sound speed at that position is shown. The bottom type will be displayed if the mouse is moved over the bottom area.

Each of the environmental parameter types has its own editor. These editors can be opened by clicking on the buttons in the *Open Editor for...* group box. The available choices are:

- *Wind Speed* – Opens the *Wind Speed Profile Editor*. The wind speed is a function of range. The *Wind Speed Profile Editor* is described in section 8.2.
- *Sound Speed* – Opens the *Sound Speed Profile Editor*. The sound speed in the water volume is a function of range and depth. The *Sound Speed Profile Editor* is described in section 8.3.
- *Volume Back Scatter* – Opens the *Volume Back Scatter Profile Editor*. The volume back scatter is a function of range and depth. The *Volume Back Scatter Profile Editor* is described in section 8.4.
- *Bottom Profile* – Opens the *Bottom Profile Editor*. The bottom profile is a function of range. The *Bottom Profile Editor* is described in section 8.4.
- *Bottom Type* – Opens the *Bottom Type Profile Editor*. The bottom type is a function of range. The *Bottom Type Profile Editor* is described in section 8.5.
- *Bottom Back Scatter* – Opens the *Bottom Back Scatter Profile Editor*. The bottom back scatter is a function of range and gracing angle. The *Bottom Back Scatter Profile Editor* is described in section 0.
- *Bottom Loss* – Opens the *Bottom Loss Profile Editor*. The bottom loss is a function of range and gracing angle. The *Bottom Loss Profile Editor* is described in section 8.6.

-
- *Reverberation + Noise* – Opens the *Reverberation And Noise Profile Editor*. The reverberation and noise is a function of range. The *Reverberation And Noise Profile Editor* is described in section 0.

The parameters in the *Model Scales* group box control the area of the calculation. The parameters controlling the calculation area are:

- *Range* – Maximal calculation range.
- *Depth* – Maximal calculation depth.

The area of interest may not be the entire calculation area. The user is therefore allowed to zoom in on areas of particular interest. To open and close this feature, use the *Allow Zoom/Normal View* button:

- *Allow Zoom* – Enables the *Editable Area* group box, and disables the *Model Scales* group box.
- *Normal View* – Disables the *Editable Area* group box, and enables the *Model Scales* group box.

The parameters in the *Editable Area* group box control the area to be seen in the plot in the *Environmental Editor*. The parameters are:

- *Range* – Start and end range of visible area in meters.
- *Depth* – Start and end depth of the visible area in meters.

The remaining buttons are global and apply to all the environmental parameters:


- *Clear Environment* – Resets all environmental parameters to default settings.
- *Open* – Opens an environmental file in xml format.
- *Save* – Saves the environmental input parameters to file in xml format.
- *Ok* – Accepts current environmental input parameters and returns to the main screen.
- *Cancel* – Discards changes and returns to the main screen.

8.2 Wind Speed

Wind speed is the strength of the wind at the ocean surface. Strong wind means higher waves and a larger bubble layer which affects the energy loss near the sea surface, and affects the scattering of reflected rays. Wind speed values can range from 0-100 m/s.

The *Wind Speed Profile Editor* can be invoked by selecting

Edit --> Wind Speed,

by clicking the  icon on the toolbar or by selecting the *Wind Speed* button in the *Environment Editor*. The editor is displayed in Figure 8.2.

The editor contains a table of Wind speed values with their corresponding ranges of validity. Both the start and stop values specify horizontal distance from the sonar position. If no wind speed is given, the editor contains the default wind speed. The wind speed table can be edited by tabbing (pressing the tab key) through the fields in the table. To enter a new data row, click in the next row or press the tab key from the rightmost field.

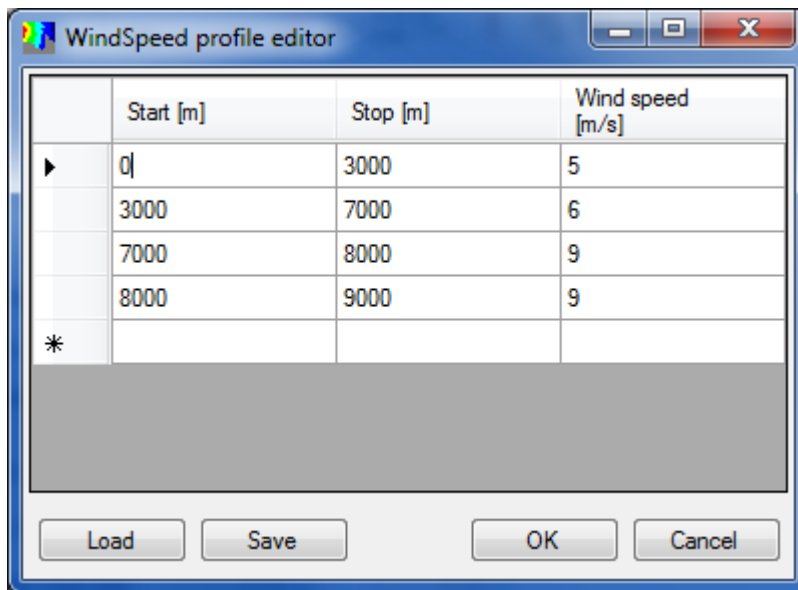


Figure 8.2 The *WindSpeed* profile editor is based on the common 2-dimensional editor, where each wind speed value is valid within a range defined by the start and stop values.

LYBIN provides an option to save the wind speed input information in an XML file. To save the wind speed information, click *Save* beneath the table, find a suitable location for the file and click *Save* again. To load an existing set of sound speed information, click *Open*, select the file and click *Open* again.

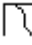
Click the *OK* button to accept the current wind speeds and return to main screen. Otherwise, click the *Cancel* button to discard changes and return to the main screen.

8.3 Sound Speed

The sound speed in the water volume is a function of both range and depth. Since the sound speed is most often measured as depth dependent profiles, LYBIN can handle multiple sound speed profiles with their separate range dependent areas of validity. The dedicated editor is displayed in Figure 8.3.

The Sound Speed Profile Editor can be invoked by selecting

Edit --> Sound Speed,

by clicking the  icon on the toolbar or by selecting the *Sound Speed* button in the *Environment Editor*.

The editor contains a graphical display of the input profiles to the left. Temperature, salinity and sound speed profiles are all displayed if they are present in the input dataset. Temperatures are coloured red, salinities are coloured green and sound speeds are coloured blue. The profile values are displayed in the table in the middle of the editor, and additional information about the profile are shown to the right.

If no sound speed profile is given, the editor contains the default profile. The default profile consists of depth, temperature, salinity and sound speed. The user defined profiles, on the other hand, do not need to contain more than depth and one of the other parameters. If no values are typed into one or two columns, the valueless columns will be removed when the next row is entered. Any single profile must have the same parameters throughout, though, i.e. the parameters included in the first row sets the standard for all the other rows in the profile.

The profile can be edited by tabbing (pressing the tab key) through the fields in the table, see Figure 8.4. To enter a new data row, click in the next row or press the tab key from the rightmost field.

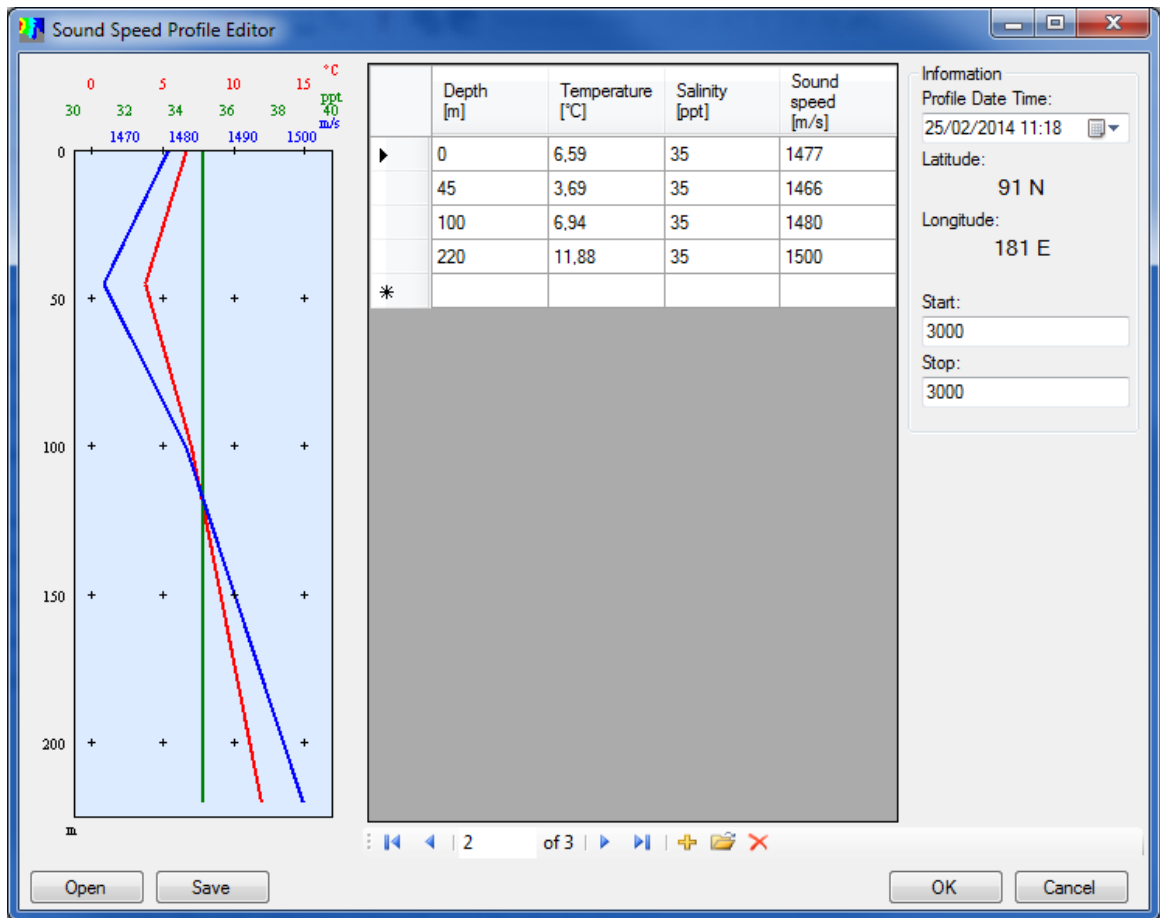




Figure 8.3 The Sound Speed Profile Editor lets the user either manually enter a profile, or import from a file. The temperature, salinity and sound speed profiles are displayed in the plot in the left part of the editor, while the editable data is presented in the table in the middle of the editor. The editor also allows for multiple profiles to be entered.

	Depth [m]	Temperature [°C]	Salinity [ppt]	Sound speed [m/s]
▶	0	6,59	35	1477
	45	3,69	35	1466
	100	6,94	35	1480
	220	11,88	35	1500
*				

Figure 8.4 Editing in the Sound Speed Profile Editor's table.

To add a new profile for another range, first set the range for the original profile by setting the fields for *Start* and *Stop*. Then click the  icon beneath the table. A new table will now appear. It can be edited with the same procedure as described earlier. Set the *Start* and *Stop* values for this new profile and push *OK*. LYBIN will interpolate between any gaps in range. To delete the current profile, click the  icon beneath the table. To step between the various profiles set over a distance, use the arrows beneath the table, see Figure 8.5.

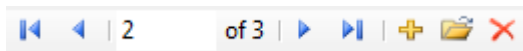



Figure 8.5 Stepping between profiles valid at different distances

In addition to profiles set up in the editor, import of individual profiles in EDF format is possible. This is a format used in SIPPICANs bathythermographs [9]. To import an EDF file, click the  icon beneath the table. A profile will then be added based on the information in the file.


In addition, the fields for time, latitude and longitude to the right in the editor will be set automatically. The user must specify start and stop values for the profile.

LYBIN provides an option to save the total sound speed input information in an XML file. To save the sound speed information, click *Save* beneath the profile's graphical display, find a suitable location for the file and click *Save* again. To load an existing set of sound speed information, click *Open*, select the file and click *Open* again.

8.4 Bottom Profile

The bottom profile editor can be invoked by selecting

Edit --> Bottom Profile,

by clicking the icon  on the toolbar, or by selecting the *Bottom Profile* button in the *Environment Editor*. The editor is displayed in Figure 8.6.

The parameters in the *Model Scales* group box control the area of the calculation. The parameters controlling the calculation area are:

- *Range* – Maximal calculation range.
- *Depth* – Maximal calculation depth.

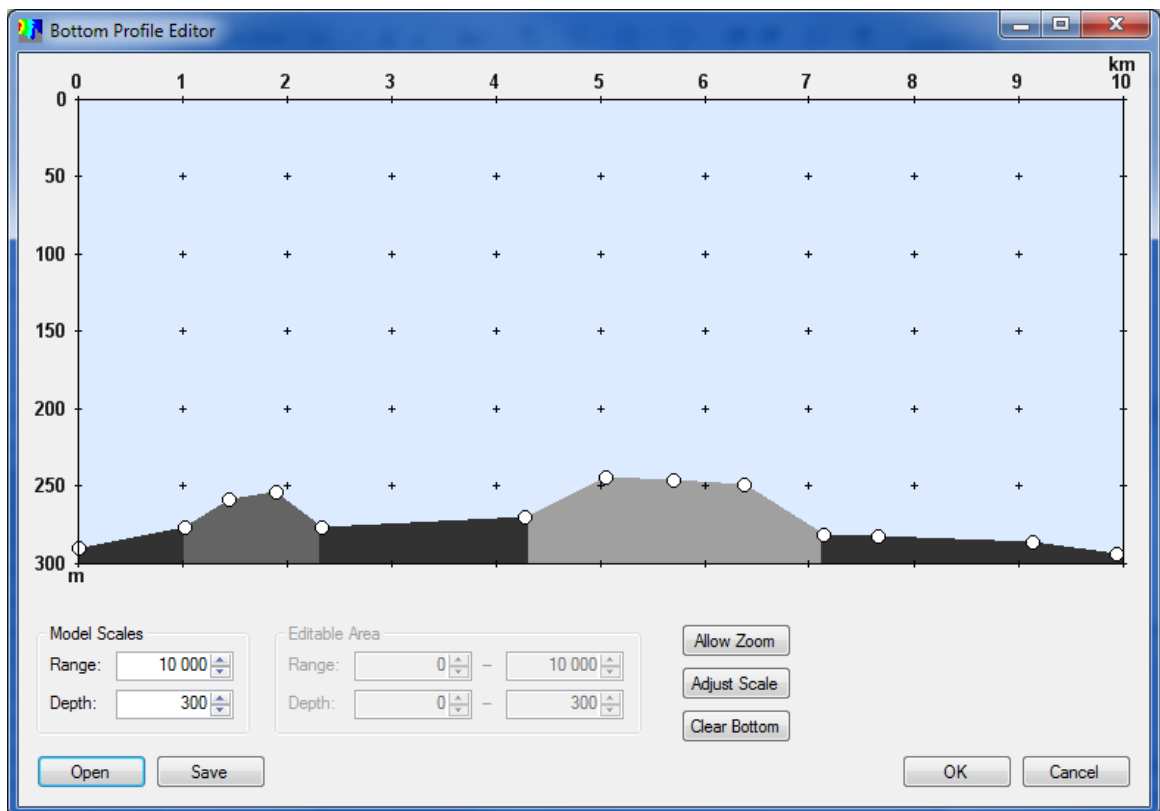


Figure 8.6 The Bottom Profile Editor lets the user create, load, alter and save a bottom profile. The vertices of the profile, displayed as circles, may be altered using the mouse pointer.

The area of interest may not be the entire calculation area. The user is therefore allowed to zoom in on areas of particular interest. To open and close this feature, push the *Allow Zoom/Normal View* button:

- *Allow Zoom* – Enables the *Editable Area* group box, and disables the *Model Scales* group box.
- *Normal View* – Disables the *Editable Area* group box, and enables the *Model Scales* group box.

The parameters in the *Editable Area* group box control the area to be seen in the plot in the *Bottom Profile Editor*. The parameters are:

- *Range* – Start and end range of visible area in meters.
- *Depth* – Start and end depth of the visible area in meters.

In order to optimize the calculation area according to the water volume of interest, there are two options available:

- *Adjust Scale* – adjust the maximum calculation depth according to the lowest bottom point. This function does not consider not-yet-accepted changes.
- *Clear Bottom* - removes all points and sets the bottom as a straight line 10 m above the bottom line of the view.

To save the bottom profile information to an XML file, click *Save* to the bottom left, find a suitable location for the file and click *Save* again. To load an existing set of bottom profile information, click *Open*, select the file and click *Open* again.

Bottom depths can also be inserted manually. Move the cursor to the desired co-ordinate and click the left mouse button to insert a new point in the bottom profile. Each time a point has been set, the editor draws a smooth path between the existing points. The physical location of the cursor is shown below the view. Clicking the left mouse button on or near an existing point lets the user change the location of this point. Clicking the right mouse button on or near one of the registered points will *remove* it from the profile. Clicking the right mouse button anywhere else in the plot reveals a context menu with the option to copy to clipboard.

When the mouse is moved over the plot, range and depth are displayed beneath the plot. The bottom type will also be displayed if the mouse is moved over the bottom area.


Click the *OK* button to accept the current bottom topography and returns to main screen. Otherwise, click the *Cancel* button to discard changes and return to the main screen.

8.5 Bottom Type

The geo-acoustic properties of the bottom can be coded by a single parameter in LYBIN: the bottom type. Bottom types range from 1 to 9, where 1 represents a hard rock type of bottom with low bottom reflection loss, while 9 represents a soft bottom with a high reflection loss. The bottom types 1-9 are FNWC bottom provinces as described in[10]. In addition, bottom types 0 and 10 have been added, representing *no loss* and *fully absorbing* bottoms, respectively. Bottom type is the default way to describe sea floor acoustical properties in LYBIN.

The *Bottom Type Profile Editor* can be invoked by selecting

Edit --> Bottom Type,

by clicking the  icon on the toolbar, or by selecting the *Bottom Type* button in the *Environment Editor*. The editor is displayed in Figure 8.7.

The editor contains a table of bottom type values with their corresponding ranges of validity. Both the start and stop values specify horizontal distance from the sonar position. If no bottom type is given, the editor contains the default bottom type. The bottom type table can be edited by tabbing (pressing the tab key) through the fields in the table. To enter a new data row, click in the next row or press the tab key from the rightmost field.

LYBIN provides an option to save the bottom type input information in an XML file. To save the bottom type information, click *Save* beneath the table, find a suitable location for the file and click *Save* again. To load an existing set of bottom type information, click *Open*, select the file and click *Open* again.

Click the *OK* button to accept the current bottom type and return to main screen. Otherwise, click the *Cancel* button to discard changes and return to the main screen.

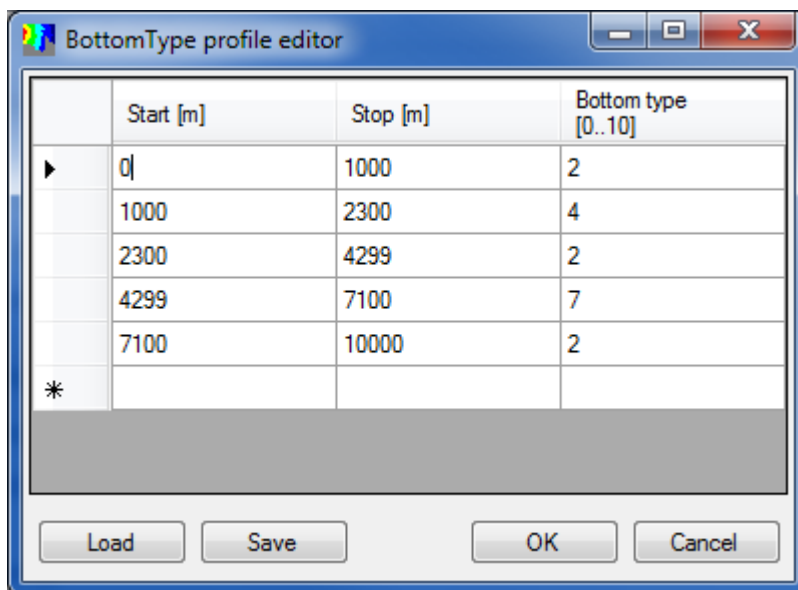


Figure 8.7 The *BottomType* profile editor is based on the common 2-dimensional editor, where each bottom type value is valid within a range defined by the start and stop values.


8.6 Bottom Loss


Bottom loss is the fraction of energy that is lost when the sound is reflected from the ocean bottom, usually expressed in dB. The bottom loss is also referred to as *forward scattering* in underwater acoustic terminology. Bottom loss is generally a function of sediment type, grazing angle and frequency. A dataset representing bottom loss is entered into LYBIN in tabular form, giving bottom loss (in dB) for a set of grazing angles. Based on the tabulated values, LYBIN interpolates to create loss values for equidistantly spaced grazing angles.



The use of bottom loss values is optional in LYBIN. The checkbox *Use measured bottom loss* (see section 6.3.4) located in the tab for *Model Parameters*, tells LYBIN to use the given bottom loss values instead of calculating them from the specified bottom type. The dedicated editor is displayed in Figure 8.8.

The *Bottom Loss Profile Editor* can be invoked by selecting

Edit --> Bottom Loss,

by clicking the  icon on the toolbar, or by selecting the *Bottom Loss* button in the *Environment Editor*.

The editor allows multiple profiles of loss values as function of grazing angle to be entered with different ranges of validity. The range of validity for each profile is given by the start and stop values. New tables can be added by pressing the  button.

The profile can be edited by tabbing (pressing the tab key) through the fields in the table. To enter a new data row, click in the next row or press the tab key from the rightmost field. To add a new profile for another range, first set the range for the original profile by setting the fields for *Start* and *Stop*. Then click the  icon beneath the table. A new table will now appear. It can be edited with the same procedure as described earlier. Set the Start and Stop values for this new profile and push *OK*. LYBIN will interpolate between any gaps in range. To delete the current profile, click the  icon beneath the table. To step between the various profiles set over a distance, use the arrows beneath the table.

LYBIN provides an option to save the total bottom loss dataset in an XML file. To save the data, click *Save* beneath the profile's graphical display, find a suitable location for the file and click *Save* again. To load an existing set of bottom loss data, click *Open*, select the file and click *Open* again.

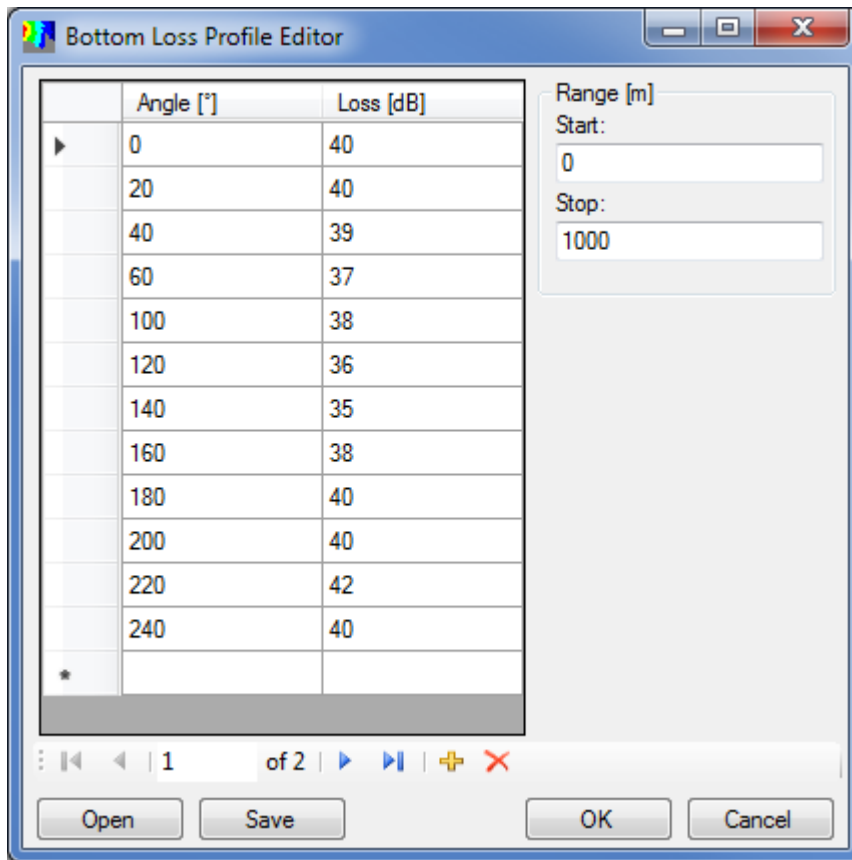


Figure 8.8 The Bottom Loss Profile Editor lets the user either manually enter a profile, or import from a file. The editor allows multiple profiles of loss values as function of gracing angle to be entered with different ranges of validity.


8.7 Reverberation and Noise

In some cases, measurements of reverberation and noise are available, and can be incorporated directly in the calculation of signal excess and probability of detection in LYBIN. Reverberation and noise input values can consist of any number of measurements with corresponding ranges. To find values for the ranges not given as measurements, LYBIN uses linear interpolation.

Reverberation and noise input is an alternative where measured values are used instead of letting LYBIN estimate reverberation and noise. LYBIN will only use the reverberation and noise input values if *Rev and noise calculation type* is set to *Measured rev and noise* as described in section 6.3.4.

The Reverberation And Noise Profile Editor can be invoked by selecting

Edit --> Reverberation and noise,

by clicking the  icon on the toolbar, or by selecting the *Reverberation+Noise* button in the *Environment Editor*. The editor is displayed in Figure 8.9.

The editor contains a table of reverberation and noise values with their corresponding distances from the sonar. To enter a new data row, click in the next row or press the tab key from the rightmost field.

LYBIN provides an option to save the reverberation and noise input information as an XML file. To save the reverberation and noise information, click *Save* beneath the table, find a suitable location for the file and click *Save* again. To load an existing set of reverberation and noise information, click *Open*, select the file and click *Open* again.

Click the *OK* button to accept the current reverberation and noise and return to main screen. Otherwise, click the *Cancel* button to discard changes and return to the main screen.

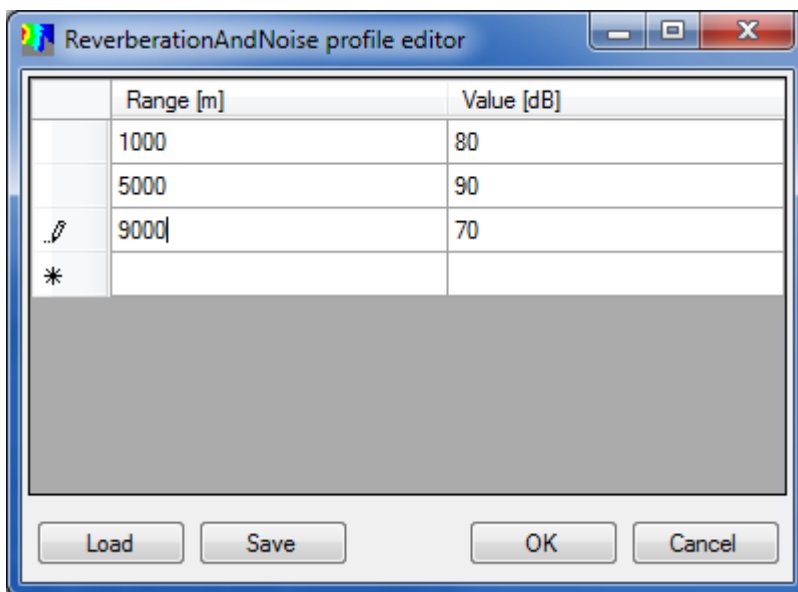


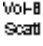
Figure 8.9 The ReverberationAndNoise profile editor is based on the 2-dimensional editor, where each reverberation and noise value is valid for a single position. The value represents a vertex on the envelope of the curve of reverberation and noise.


8.8 Volume Back Scatter



Volume back scatter is the fraction of energy scattered back towards the receiver from the sea volume. Scattering elements in the sea volume can be particles or organic life, like plankton, fish or sea mammals. The volume back scatter is not distributed uniformly in the sea, and can vary considerably as a function of depth, and also on range and time of the day. In LYBIN, the volume back scatter is given as a profile of back scattering coefficients as a function of depth. To find scatter values for the depths not given, linear interpolation is used. The validity range of each profile will be given by the corresponding start range and stop range values. The dedicated editor is displayed in Figure 8.10.

The Volume Back Scatter Profile Editor can be invoked by selecting

Edit --> Volume Back scatter,

by clicking the  icon on the toolbar, or by selecting the *Volume Back scatter* button in the *Environment Editor*.

The editor allows multiple profiles of scatter values as function of depth to be entered with different ranges of validity. The range of validity for each profile is given by the start and stop values. New tables can be added by pressing the  button.

The profile can be edited by tabbing (pressing the tab key) through the fields in the table. To enter a new data row, click in the next row or press the tab key from the rightmost field. To add a new profile for another range, first set the range for the original profile by setting the fields for *Start* and *Stop*. Then click the  icon beneath the table. A new table will now appear. It can be edited with the same procedure as described earlier. Set the Start and Stop values for this new profile and push *OK*. LYBIN will interpolate between any gaps in range. To delete the current profile, click the  icon beneath the table. To step between the various profiles set over a distance, use the arrows beneath the table.

LYBIN provides an option to save the total volume back scatter dataset in an XML file. To save the data, click *Save* beneath the profile's graphical display, find a suitable location for the file and click *Save* again. To load an existing set of volume back scatter data, click *Open*, select the file and click *Open* again.

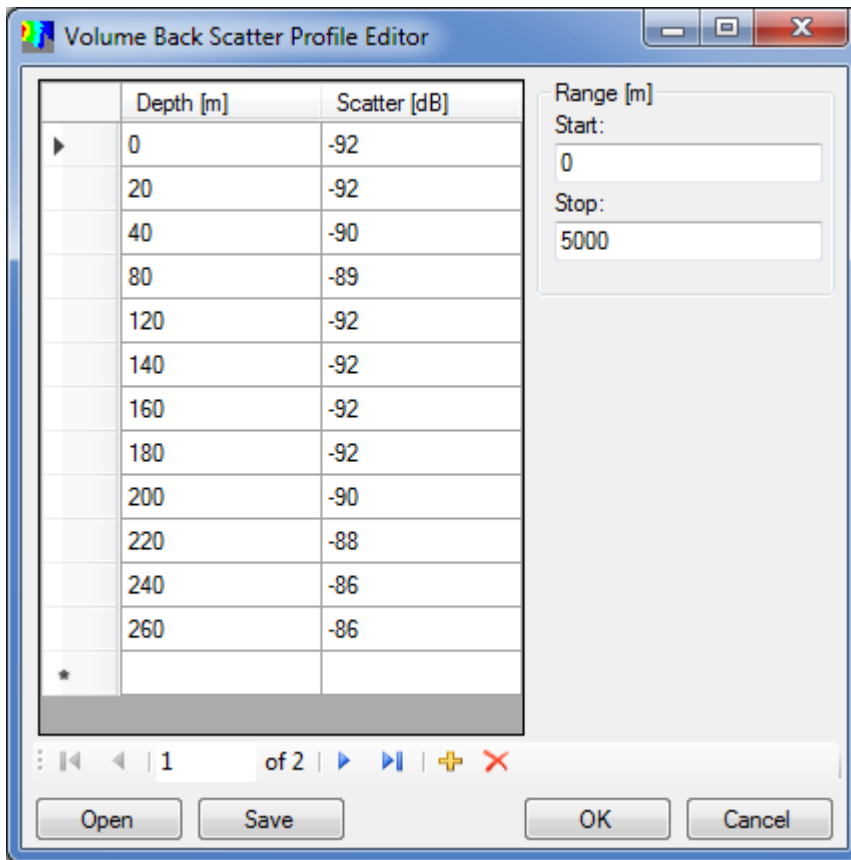


Figure 8.10 The Volume Back Scatter Profile Editor lets the user either manually enter a profile, or import from a file. The editor allows multiple profiles of scatter values as function of depth to be entered with different ranges of validity.

8.9 Bottom Back Scatter

Bottom back scatter is the fraction of energy that is scattered back towards to the receiver when a ray hits the sea bottom. The bottom back scatter is a function of sediment type, grazing angle and frequency. A dataset representing bottom back scatter coefficients is entered into LYBIN in tabular form, giving back scattering coefficients (in dB) for a set of grazing angles. Based on the tabulated values, LYBIN interpolates between tabulated values to create back scatter coefficients for equidistantly spaced grazing angles. The back scatter coefficients are given as dB per square meter.

Bottom back scatter is an alternate way to calculate bottom reverberation. LYBIN will only use the bottom back scatter values given if *Rev and noise calculation type* is set to *Bottom Back Scatter* as described in section 6.3.4.

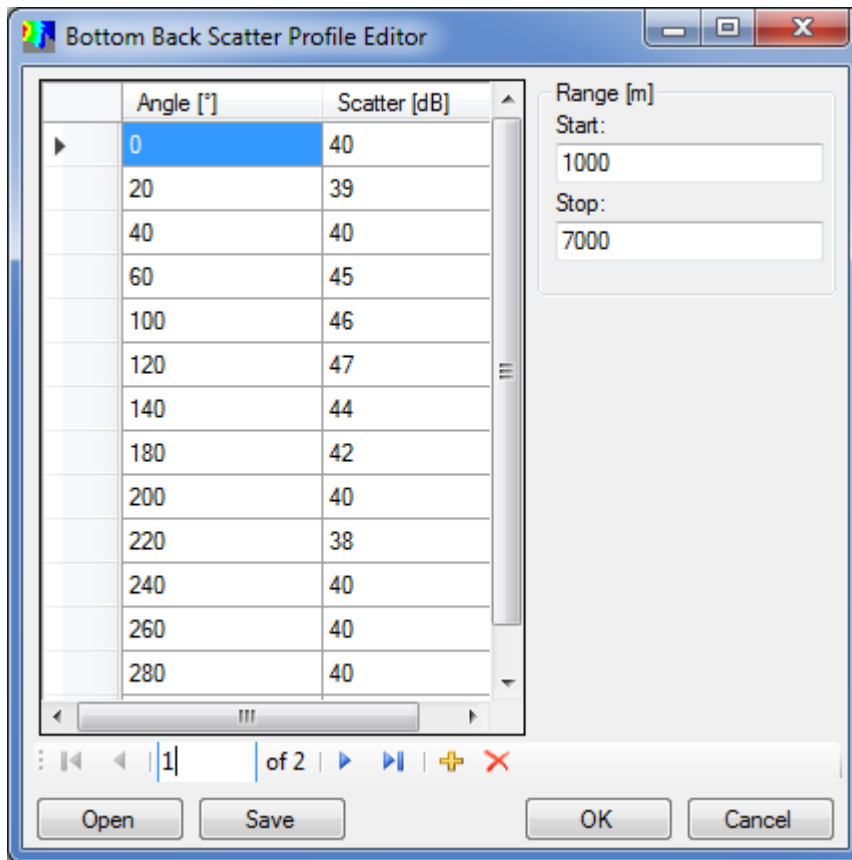
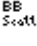



Figure 8.11 The Bottom Back Scatter Profile Editor lets the user either manually enter a profile, or import from a file. The editor allows multiple profiles of scatter values as function of gracing angle to be entered with different ranges of validity.



The Bottom Back Scatter Profile Editor is displayed in Figure 8.11 and can be invoked by selecting

Edit --> Bottom Back scatter,

by clicking the  icon on the toolbar, or by selecting the *Bottom Back scatter* button in the *Environment Editor*.

The editor allows multiple profiles of scatter values as function of gracing angle to be entered with different ranges of validity. The range of validity for each profile is given by the start and stop values. New tables can be added by pressing the  button.

The profile can be edited by tabbing (pressing the tab key) through the fields in the table. To enter a new data row, click in the next row or press the tab key from the rightmost field. To

add a new profile for another range, first set the range for the original profile by setting the fields for *Start* and *Stop*. Then click the  icon beneath the table. A new table will now appear. It can be edited with the same procedure as described earlier. Set the *Start* and *Stop* values for this new profile and push *OK*. LYBIN will interpolate between any gaps in range. To delete the current profile, click the  icon beneath the table. To step between the various profiles set over a distance, use the arrows beneath the table.

LYBIN provides an option to save the total bottom back scatter dataset in an XML file. To save the data, click *Save* beneath the profile's graphical display, find a suitable location for the file and click *Save* again. To load an existing set of bottom back scatter data, click *Open*, select the file and click *Open* again.

8.10 Target Strength Table


Target Strength is the relation between the incoming and the returned echo from the target. A value of -15 means that the intensity reflected from this particular target is 15 dB less than the incoming signal. This parameter is used in the sonar equation for active sonars.



The target strength is a function of frequency and the aspect angle of the target, seen from the sonar platform. The aspect angle can be from 0-359°. If only values less than 180° are given in the table, the target strength values are reflected symmetrically through the longitudinal axis of the target. Each target strength table has a valid frequency range with a given minimum and maximum frequency.

The actual aspect angle to be used in the simulation is given by the parameter Target Aspect Angle as described in section 6.2.1. The target strength table is an alternative way to set the target strength. Whether LYBIN shall find target strength from the table or use the parameter Target Strength, is given by the parameter Use measured target strength as described in section 6.3.4. If Use measured target strength is true, the parameter Target Strength will be updated with the target strength value that was actually used, found in the table based on frequency and target aspect angle.

The Target strength table editor is displayed in Figure 8.12 and can be invoked by

clicking the  icon on the toolbar.

The editor allows multiple tables of target strength values as function of aspect angle to be entered with different frequency ranges of validity. The frequency range of validity for each table is given by the start and stop values. New tables can be added by pressing the  button.

The table can be edited by tabbing (pressing the tab key) through the fields in the table. To enter a new data row, click in the next row or press the tab key from the rightmost field. To add a new table for another frequency range, first set the frequency range for the original table by setting the fields for Start and Stop. Then click the  icon beneath the table. A new table will now appear. It can be edited with the same procedure as described earlier. Set the Start and Stop values for this new table and push OK. LYBIN will interpolate between any gaps in frequency range. To delete the current table, click the  icon beneath the table. To step between the various tables, use the arrows beneath the table.

LYBIN provides an option to save the total target strength dataset in an XML file. To save the data, click Save, find a suitable location for the file and click Save again. To load an existing set of target strength data, click Open, select the file and click Open again.

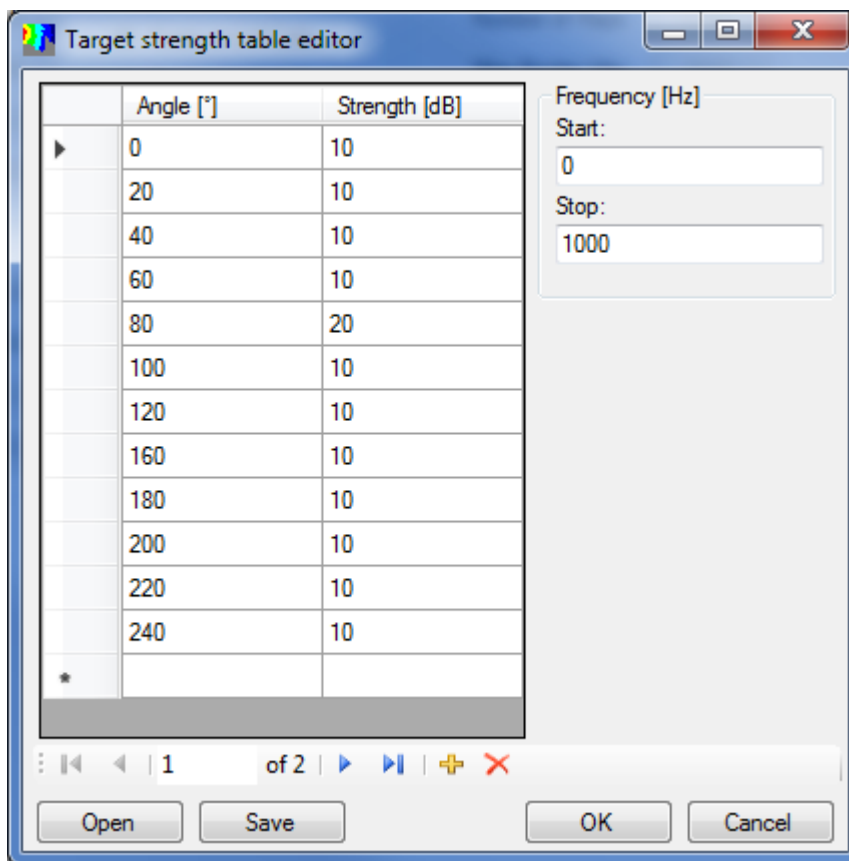


Figure 8.12 The Target strength table editor lets the user either manually enter a profile, or import from a file. The editor allows multiple tables of target strength values as function of aspect angle to be entered with different ranges of validity.

9 Printing

LYBIN has functionality for printing the calculated plots. The functionality is found under the File-menu, as Print... and Print preview.

Both options print the calculation result displayed in the upper right window within LYBIN in multi-view mode. When in single view mode, the displayed result is printed.

The print preview functionality can be used for displaying how the selected calculation result will appear printed on paper.

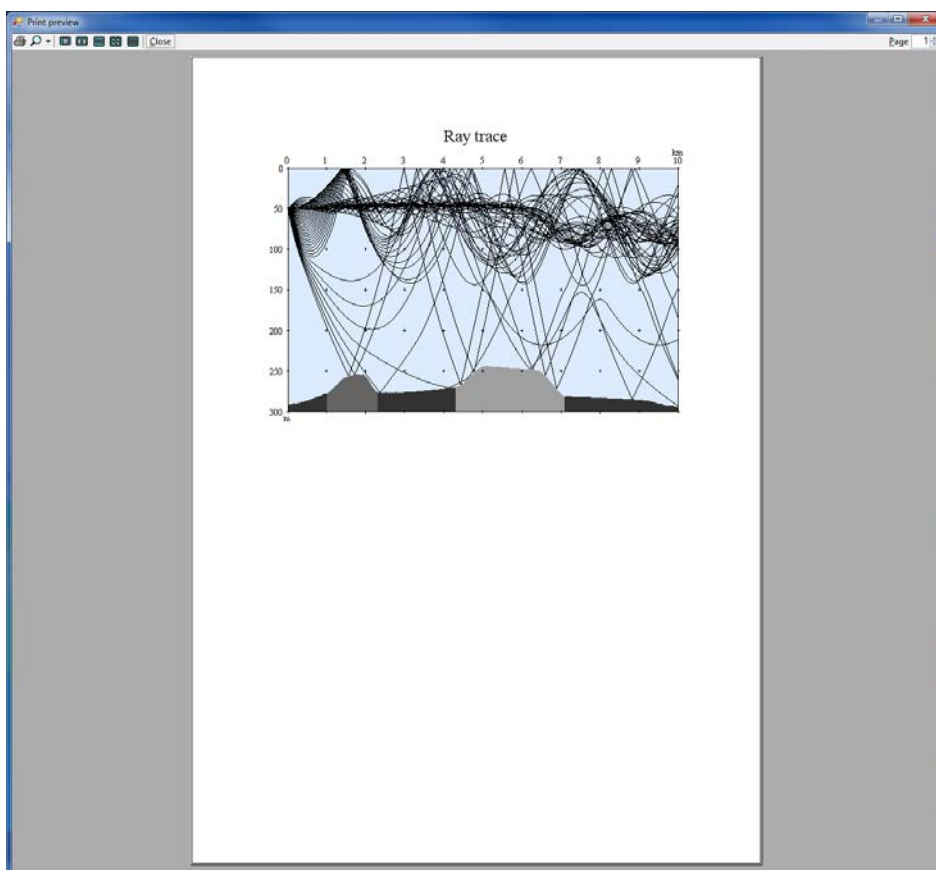


Figure 9.1 Screen-shot of the print preview window. The picture displays how the calculated ray trace will appear on an A4 page.

The print functionality will print the calculation results on a printer of choice.

Appendix: LYBIN XML format v3.0

This section contains supplementary material describing file format of LYBIN xml files.

A.1 Complete model with default values

The parameters inside the tag *MODELFILE* are used in the calculation. The parameters inside the tag *ShipInfo* are optional.

```
<?xml version="1.0" encoding="utf-8"?>
<LYBINFILE xmlns:xsi="http://www.w3.org/2001/XMLSchema-instance"
xmlns:xsd="http://www.w3.org/2001/XMLSchema">
  <FILEINFO>
    <FORMATVERSION>3.00</FORMATVERSION>
  </FILEINFO>
  <MODELFILE>
    <MODELPARAMETERS>
      <BOTTOMREVERBERATIONCALCULATION>true</BOTTOMREVERBERATIONCALCULATION>
      <DEPTHCELLS>50</DEPTHCELLS>
      <DEPTHCELLSIZE>6</DEPTHCELLSIZE>
      <DEPTHSCALE>300</DEPTHSCALE>
      <DEPTHSTEPS>1000</DEPTHSTEPS>
      <DEPTHSTEPSIZE>0.28</DEPTHSTEPSIZE>
      <IMPULSERESPONSECALCULATION>false</IMPULSERESPONSECALCULATION>
      <IMPULSERESPONSEDEPTH>0</IMPULSERESPONSEDEPTH>
      <MAXBORDERHITS>5000</MAXBORDERHITS>
      <NOISECALCULATION>true</NOISECALCULATION>
      <PASSIVECALCULATION>false</PASSIVECALCULATION>
      <PROBABILITYOFDETECTIONCALCULATION>true</PROBABILITYOFDETECTIONCALCULATION>
      <RANGECELLS>50</RANGECELLS>
      <RANGECELLSIZE>200</RANGECELLSIZE>
      <RANGESCALE>10000</RANGESCALE>
      <RANGESTEPS>500</RANGESTEPS>
      <RANGESTEPSIZE>20</RANGESTEPSIZE>
      <RAYTRACECALCULATION>true</RAYTRACECALCULATION>
      <SIGNALEXCESSCALCULATION>true</SIGNALEXCESSCALCULATION>
      <SIGNALEXCESSCONSTANT>3</SIGNALEXCESSCONSTANT>
      <SURFACEREVERBERATIONCALCULATION>true</SURFACEREVERBERATIONCALCULATION>
      <TERMINATIONINTENSITY>1E-16</TERMINATIONINTENSITY>
      <TRANSMISSIONLOSSFROMTARGETCALCULATION>true</TRANSMISSIONLOSSFROMTARGETCALCULATION>
      <TRANSMISSIONLOSSTOTARGETCALCULATION>true</TRANSMISSIONLOSSTOTARGETCALCULATION>
      <TRAVELTIMEANGLERESOLUTION>1</TRAVELTIMEANGLERESOLUTION>
      <TRAVELTIMECALCULATION>false</TRAVELTIMECALCULATION>
      <TRLRAYS>1000</TRLRAYS>
      <TYPEOFREVNOISECALCULATION>0</TYPEOFREVNOISECALCULATION>
      <USEMEASUREDBOTTOMLOSS>false</USEMEASUREDBOTTOMLOSS>
      <USEMEASUREDHORIZONTALBEAMWIDTH>false</USEMEASUREDHORIZONTALBEAMWIDTH>
      <USEMEASUREDPASSIVEPROCESSINGGAIN>true</USEMEASUREDPASSIVEPROCESSINGGAIN>
      <USERAYLEIGHBOTTOMLOSS>false</USERAYLEIGHBOTTOMLOSS>
      <USEWAVEHEIGHT>false</USEWAVEHEIGHT>
      <VISUALBOTTOMHITS>1</VISUALBOTTOMHITS>
      <VISUALNUMRAYS>50</VISUALNUMRAYS>
      <VISUALRAYTRACECALCULATION>true</VISUALRAYTRACECALCULATION>
      <VISUALSURFACEHITS>2</VISUALSURFACEHITS>
      <VOLUMEREVERBERATIONCALCULATION>true</VOLUMEREVERBERATIONCALCULATION>
    </MODELPARAMETERS>
    <PLATFORMFILE>
      <PLATFORMNAME />
      <PLATFORMTYPE />
      <LATITUDE>60.1</LATITUDE>
      <LONGITUDE>4.4</LONGITUDE>
      <COURSE>0</COURSE>
    </PLATFORMFILE>
  </MODELFILE>
</LYBINFILE>
```

```

<SELFNOISE>50</SELFNOISE>
<SELFNOISEPASSIVE>50</SELFNOISEPASSIVE>
<SPEED>10</SPEED>
<SENSORFILE>
  <BEAMWIDTHHORIZONTAL>20</BEAMWIDTHHORIZONTAL>
  <BEAMWIDTHRECEIVER>15</BEAMWIDTHRECEIVER>
  <BEAMWIDTHTRANSMITTER>15</BEAMWIDTHTRANSMITTER>
  <CALIBRATIONFACTOR>0</CALIBRATIONFACTOR>
  <DEPTH>5</DEPTH>
  <DETECTIONTHRESHOLD>10</DETECTIONTHRESHOLD>
  <DIRECTIVITYINDEX>20</DIRECTIVITYINDEX>
  <FREQUENCY>7000</FREQUENCY>
  <INTEGRATIONTIMEPASSIVE>1</INTEGRATIONTIMEPASSIVE>
  <PASSIVEBANDWIDTH>100</PASSIVEBANDWIDTH>
  <PASSIVEFREQUENCY>800</PASSIVEFREQUENCY>
  <PASSIVEPROCESSINGGAIN>6.54</PASSIVEPROCESSINGGAIN>
  <SIDELOBERECEIVER>13</SIDELOBERECEIVER>
  <SIDELOBETRANSMITTER>13</SIDELOBETRANSMITTER>
  <SONARTYPEPASSIVE>0</SONARTYPEPASSIVE>
  <SOURCELEVEL>221</SOURCELEVEL>
  <SOURCELEVELPASSIVE>150</SOURCELEVELPASSIVE>
  <SYSTEMLOSS>0</SYSTEMLOSS>
  <TILTRECEIVER>4</TILTRECEIVER>
  <TILTTRANSMITTER>4</TILTTRANSMITTER>
  <PULSE>
    <ENVELOPEFUNC>Hann</ENVELOPEFUNC>
    <FILTERBANDWIDTH>100</FILTERBANDWIDTH>
    <FMBANDWIDTH>100</FMBANDWIDTH>
    <FORM>FM</FORM>
    <LENGTH>60</LENGTH>
  </PULSE>
</SENSORFILE>
</PLATFORMFILE>
<ENVIRONMENTFILE>
  <BOTTOMFILE>
    <BOTTOMPROFILE>
      <RANGE>0</RANGE>
      <DEPTH>280</DEPTH>
    </BOTTOMPROFILE>
  </BOTTOMFILE>
  <BOTTOMTYPEFILE>
    <BOTTOMTYPE>
      <START>0</START>
      <STOP>0</STOP>
      <TYPE>4</TYPE>
    </BOTTOMTYPE>
  </BOTTOMTYPEFILE>
<OCEANFILE>
  <AMBIENTNOISELEVEL>50</AMBIENTNOISELEVEL>
  <PH>8</PH>
  <PRECIPITATIONNOISETYPE>0</PRECIPITATIONNOISETYPE>
  <REVERBERATIONZONE>1</REVERBERATIONZONE>
  <SHIPDENSITY>4</SHIPDENSITY>
  <SOURCELEVELTARGET>10</SOURCELEVELTARGET>
  <SURFACESCATTERFLAG>true</SURFACESCATTERFLAG>
  <TARGETSTRENGTH>10</TARGETSTRENGTH>
</OCEANFILE>
<RAYLEIGHBOTTOMLOSSFILE>
  <BOTTOMATTENUATION>0.5</BOTTOMATTENUATION>
  <BOTTOMSOUNDSPEED>1700</BOTTOMSOUNDSPEED>
  <DENSITYRATIO>2</DENSITYRATIO>
</RAYLEIGHBOTTOMLOSSFILE>
<SOUNDSPEEDPROFILE>
  <START>0</START>
  <STOP>1000</STOP>
  <PROFILE>
    <DEPTH>0</DEPTH>
    <TEMPERATURE>7.36</TEMPERATURE>
    <SALINITY>35</SALINITY>
  </PROFILE>
</SOUNDSPEEDPROFILE>

```

```

        <SOUNDVELOCITY>1480</SOUNDVELOCITY>
      </PROFILE>
    </SOUNDSPEEDPROFILE>
    <VOLUMEBACKSCATTERFILE>
      <VOLUMEBACKSCATTER>
        <START>0</START>
        <STOP>0</STOP>
        <SCATTERDENOM>DB</SCATTERDENOM>
        <VOLUMESCATTER>
          <DEPTH>0</DEPTH>
          <SCATTER>-92</SCATTER>
        </VOLUMESCATTER>
      </VOLUMEBACKSCATTER>
    </VOLUMEBACKSCATTERFILE>
    <WINDFILE>
      <WIND>
        <START>0</START>
        <STOP>0</STOP>
        <WINDSPEED>0</WINDSPEED>
      </WIND>
    </WINDFILE>
    <LAMBERTSCOEFFICIENTFILE>
      <LAMBERTSCOEFFICIENT>
        <START>0</START>
        <STOP>1000</STOP>
        <COEFFICIENT>-27</COEFFICIENT>
      </LAMBERTSCOEFFICIENT>
    </LAMBERTSCOEFFICIENTFILE>
  </ENVIRONMENTFILE>
</MODELFILE>
<ShipInfo>
  <SHIPNAME>Lybin default ship</SHIPNAME>
  <SHIPCLASS>Auto-generated</SHIPCLASS>
  <COURSE>0</COURSE>
  <SPEED>0</SPEED>
  <LATITUDE>0N</LATITUDE>
  <LONGITUDE>0E</LONGITUDE>
  <SELFNOISE>
    <SHIPNAME>defaultship</SHIPNAME>
    <DATE>01-01-2009</DATE>
    <LATITUDE>0N</LATITUDE>
    <LONGITUDE>0E</LONGITUDE>
    <NUMFREQUENCIES>1</NUMFREQUENCIES>
    <NUMSPEEDS>1</NUMSPEEDS>
    <NUMSECTORS>1</NUMSECTORS>
    <NUMDEPTHS>1</NUMDEPTHS>
    <FREQUENCIES>7000</FREQUENCIES>
    <SPEEDS>10</SPEEDS>
    <DEPTHS>5</DEPTHS>
    <NOISEMATRIX>50</NOISEMATRIX>
  </SELFNOISE>
  <CURRENTSONAR>0</CURRENTSONAR>
  <SONAR>
    <SONARNAME>defaultsonar</SONARNAME>
    <DEPTHFIXED>true</DEPTHFIXED>
    <DEPTHMIN>5</DEPTHMIN>
    <DEPTHMAX>5</DEPTHMAX>
    <DEPTH>5</DEPTH>
    <TILTFIXED>true</TILTFIXED>
    <TILTMIN>4</TILTMIN>
    <TILTMAX>4</TILTMAX>
    <TILTTRANSMITTER>4</TILTTRANSMITTER>
    <TILTRECEIVER>4</TILTRECEIVER>
    <SIDELOBETRANSMITTER>13</SIDELOBETRANSMITTER>
    <SIDELOBERECEIVER>13</SIDELOBERECEIVER>
    <CALIBRATIONFACTOR>0</CALIBRATIONFACTOR>
    <DETECTIONTHRESHOLD>10</DETECTIONTHRESHOLD>
    <SONARTYPEPASSIVE>0</SONARTYPEPASSIVE>
    <INTEGRATIONTIMEPASSIVE>1</INTEGRATIONTIMEPASSIVE>
  </SONAR>

```

```

<PASSIVEBANDWIDTH>100</PASSIVEBANDWIDTH>
<BEAMWIDTHTRANSMITTER>15</BEAMWIDTHTRANSMITTER>
<BEAMWIDTHRECEIVER>15</BEAMWIDTHRECEIVER>
<RELATIVEBEARING>45</RELATIVEBEARING>
<SYSTEMLOSS>0</SYSTEMLOSS>
<CURRENTFREQUENCY>0</CURRENTFREQUENCY>
<CURRENTMODE>0</CURRENTMODE>
<CURRENTPULSE>0</CURRENTPULSE>
<NUMPULSES>1</NUMPULSES>
<NUMMODES>1</NUMMODES>
<NUMFREQUENCIES>1</NUMFREQUENCIES>
<PULSE>
  <ENVELOPEFUNC>Hann</ENVELOPEFUNC>
  <FILTERBANDWIDTH>100</FILTERBANDWIDTH>
  <FMBANDWIDTH>100</FMBANDWIDTH>
  <FORM>FM</FORM>
  <LENGTH>60</LENGTH>
</PULSE>
<FREQUENCIES>7000</FREQUENCIES>
<DIRECTIVITY>20</DIRECTIVITY>
<MODES>"defaultmode"</MODES>
<SOURCELEVEL>221</SOURCELEVEL>
</SONAR>
</ShipInfo>
</LYBINFILE>

```

A.2 Wind Speed XML format

```

<?xml version="1.0" encoding="utf-8"?>
<WINDFILE xmlns:xsi="http://www.w3.org/2001/XMLSchema-instance"
xmlns:xsd="http://www.w3.org/2001/XMLSchema">
  <FILEINFO>
    <FORMATVERSION>3.00</FORMATVERSION>
  </FILEINFO>
  <WIND>
    <START>0</START>
    <STOP>5000</STOP>
    <WINDSPEED>6</WINDSPEED>
  </WIND>
  <WIND>
    <START>5000</START>
    <STOP>10000</STOP>
    <WINDSPEED>8</WINDSPEED>
  </WIND>
</WINDFILE>

```

A.3 Sound Speed XML format

```
<?xml version="1.0" encoding="utf-8"?>
<SOUNDSPEEDFILE xmlns:xsi="http://www.w3.org/2001/XMLSchema-instance"
xmlns:xsd="http://www.w3.org/2001/XMLSchema">
  <FILEINFO>
    <FORMATVERSION>3.00</FORMATVERSION>
  </FILEINFO>
  <SOUNDSPEEDPROFILE>
    <START>0</START>
    <STOP>3500</STOP>
    <PROFILE>
      <DEPTH>0</DEPTH>
      <TEMPERATURE>7.36366126149536</TEMPERATURE>
      <SALINITY>35</SALINITY>
      <SOUNDVELOCITY>1480</SOUNDVELOCITY>
    </PROFILE>
    <PROFILE>
      <DEPTH>100</DEPTH>
      <TEMPERATURE>7.36366126149536</TEMPERATURE>
      <SALINITY>35</SALINITY>
      <SOUNDVELOCITY>1500</SOUNDVELOCITY>
    </PROFILE>
  </SOUNDSPEEDPROFILE>
  <SOUNDSPEEDPROFILE>
    <START>4500</START>
    <STOP>9500</STOP>
    <PROFILE>
      <DEPTH>35</DEPTH>
      <SOUNDVELOCITY>1497</SOUNDVELOCITY>
    </PROFILE>
    <PROFILE>
      <DEPTH>55</DEPTH>
      <SOUNDVELOCITY>1499</SOUNDVELOCITY>
    </PROFILE>
    <PROFILE>
      <DEPTH>75</DEPTH>
      <SOUNDVELOCITY>1500</SOUNDVELOCITY>
    </PROFILE>
  </SOUNDSPEEDPROFILE>
</SOUNDSPEEDFILE>
```

A.4 Volume Back Scatter XML format

```
<?xml version="1.0" encoding="utf-8"?>
<VOLUMEBACKSCATTERFILE xmlns:xsi="http://www.w3.org/2001/XMLSchema-instance"
xmlns:xsd="http://www.w3.org/2001/XMLSchema">
  <FILEINFO>
    <FORMATVERSION>3.00</FORMATVERSION>
  </FILEINFO>
  <VOLUMEBACKSCATTER>
    <START>0</START>
    <STOP>500</STOP>
    <SCATTERDENOM>DB</SCATTERDENOM>
    <VOLUMESCATTER>
      <DEPTH>0</DEPTH>
      <SCATTER>-96</SCATTER>
    </VOLUMESCATTER>
    <VOLUMESCATTER>
      <DEPTH>23</DEPTH>
      <SCATTER>-97</SCATTER>
    </VOLUMESCATTER>
  </VOLUMEBACKSCATTER>
  <VOLUMEBACKSCATTER>
    <START>7000</START>
```

```

<STOP>10000</STOP>
<SCATTERDENOM>DB</SCATTERDENOM>
<VOLUMESCATTER>
  <DEPTH>10</DEPTH>
  <SCATTER>-91</SCATTER>
</VOLUMESCATTER>
<VOLUMESCATTER>
  <DEPTH>50</DEPTH>
  <SCATTER>-92</SCATTER>
</VOLUMESCATTER>
<VOLUMESCATTER>
  <DEPTH>80</DEPTH>
  <SCATTER>-94</SCATTER>
</VOLUMESCATTER>
</VOLUMEBACKSCATTER>
</VOLUMEBACKSCATTERFILE>

```

A.5 Bottom Profile XML format

```

<?xml version="1.0" encoding="utf-8"?>
<BOTTOMFILE xmlns:xsi="http://www.w3.org/2001/XMLSchema-instance"
xmlns:xsd="http://www.w3.org/2001/XMLSchema">
  <FILEINFO>
    <FORMATVERSION>3.00</FORMATVERSION>
  </FILEINFO>
  <BOTTOMPROFILE>
    <RANGE>0</RANGE>
    <DEPTH>280</DEPTH>
  </BOTTOMPROFILE>
  <BOTTOMPROFILE>
    <RANGE>943.66200268268585</RANGE>
    <DEPTH>275.23809671401978</DEPTH>
  </BOTTOMPROFILE>
  <BOTTOMPROFILE>
    <RANGE>2281.6900908946991</RANGE>
    <DEPTH>252.3809552192688</DEPTH>
  </BOTTOMPROFILE>
  <BOTTOMPROFILE>
    <RANGE>3661.9716882705688</RANGE>
    <DEPTH>280.0000011920929</DEPTH>
  </BOTTOMPROFILE>
  <BOTTOMPROFILE>
    <RANGE>5436.6195201873779</RANGE>
    <DEPTH>280.0000011920929</DEPTH>
  </BOTTOMPROFILE>
  <BOTTOMPROFILE>
    <RANGE>6352.112889289856</RANGE>
    <DEPTH>252.3809552192688</DEPTH>
  </BOTTOMPROFILE>
  <BOTTOMPROFILE>
    <RANGE>7309.8593950271606</RANGE>
    <DEPTH>250.47619342803955</DEPTH>
  </BOTTOMPROFILE>
  <BOTTOMPROFILE>
    <RANGE>7929.5772314071655</RANGE>
    <DEPTH>282.85714387893677</DEPTH>
  </BOTTOMPROFILE>
  <BOTTOMPROFILE>
    <RANGE>8633.80253314972</RANGE>
    <DEPTH>288.57142925262451</DEPTH>
  </BOTTOMPROFILE>
  <BOTTOMPROFILE>
    <RANGE>9098.5918045043945</RANGE>
    <DEPTH>264.76190686225891</DEPTH>
  </BOTTOMPROFILE>
</BOTTOMFILE>

```

A.6 Bottom Type XML format

```
<?xml version="1.0" encoding="utf-8"?>
<BOTTOMTYPEFILE xmlns:xsi="http://www.w3.org/2001/XMLSchema-instance"
xmlns:xsd="http://www.w3.org/2001/XMLSchema">
  <FILEINFO>
    <FORMATVERSION>3.00</FORMATVERSION>
  </FILEINFO>
  <BOTTOMTYPE>
    <START>0</START>
    <STOP>300</STOP>
    <TYPE>4</TYPE>
  </BOTTOMTYPE>
  <BOTTOMTYPE>
    <START>300</START>
    <STOP>4300</STOP>
    <TYPE>6</TYPE>
  </BOTTOMTYPE>
  <BOTTOMTYPE>
    <START>5300</START>
    <STOP>10000</STOP>
    <TYPE>5</TYPE>
  </BOTTOMTYPE>
</BOTTOMTYPEFILE>
```

A.7 Bottom Back Scatter XML format

```
<?xml version="1.0" encoding="utf-8"?>
<BOTTOMBACKSCATTERINGFILE xmlns:xsi="http://www.w3.org/2001/XMLSchema-instance"
xmlns:xsd="http://www.w3.org/2001/XMLSchema">
  <FILEINFO>
    <FORMATVERSION>3.00</FORMATVERSION>
  </FILEINFO>
  <BOTTOMBACKSCATTERING>
    <START>0</START>
    <STOP>5000</STOP>
    <ANGLEDENOM>DEG</ANGLEDENOM>
    <SCATTERDENOM>DB</SCATTERDENOM>
    <BOTTOMSCATTER>
      <ANGLE>0</ANGLE>
      <SCATTER>40</SCATTER>
    </BOTTOMSCATTER>
    <BOTTOMSCATTER>
      <ANGLE>50</ANGLE>
      <SCATTER>42</SCATTER>
    </BOTTOMSCATTER>
  </BOTTOMBACKSCATTERING>
  <BOTTOMBACKSCATTERING>
    <START>5000</START>
    <STOP>10000</STOP>
    <ANGLEDENOM>DEG</ANGLEDENOM>
    <SCATTERDENOM>DB</SCATTERDENOM>
    <BOTTOMSCATTER>
      <ANGLE>0</ANGLE>
      <SCATTER>46</SCATTER>
    </BOTTOMSCATTER>
    <BOTTOMSCATTER>
      <ANGLE>77</ANGLE>
      <SCATTER>41</SCATTER>
    </BOTTOMSCATTER>
    <BOTTOMSCATTER>
      <ANGLE>80</ANGLE>
      <SCATTER>40</SCATTER>
    </BOTTOMSCATTER>
  </BOTTOMBACKSCATTERING>
</BOTTOMBACKSCATTERINGFILE>
```

A.8 Bottom Loss XML format

```
<?xml version="1.0" encoding="utf-8"?>
<BOTTOMLOSSFILE xmlns:xsi="http://www.w3.org/2001/XMLSchema-instance"
xmlns:xsd="http://www.w3.org/2001/XMLSchema">
  <FILEINFO>
    <FORMATVERSION>3.00</FORMATVERSION>
  </FILEINFO>
  <BOTTOMLOSS>
    <START>100</START>
    <STOP>3000</STOP>
    <ANGLEDENOM>DEG</ANGLEDENOM>
    <LOSSDENOM>DB</LOSSDENOM>
    <VALUE>
      <ANGLE>0</ANGLE>
      <LOSS>22</LOSS>
    </VALUE>
    <VALUE>
      <ANGLE>22</ANGLE>
      <LOSS>33</LOSS>
    </VALUE>
    <VALUE>
      <ANGLE>45</ANGLE>
      <LOSS>40</LOSS>
    </VALUE>
  </BOTTOMLOSS>
  <BOTTOMLOSS>
    <START>3500</START>
    <STOP>8000</STOP>
    <ANGLEDENOM>DEG</ANGLEDENOM>
    <LOSSDENOM>DB</LOSSDENOM>
    <VALUE>
      <ANGLE>0</ANGLE>
      <LOSS>40</LOSS>
    </VALUE>
    <VALUE>
      <ANGLE>24</ANGLE>
      <LOSS>37</LOSS>
    </VALUE>
  </BOTTOMLOSS>
</BOTTOMLOSSFILE>
```

A.9 Reverberation and noise XML format

```
<?xml version="1.0" encoding="utf-8"?>
<REVANDNOISEFILE xmlns:xsi="http://www.w3.org/2001/XMLSchema-instance"
xmlns:xsd="http://www.w3.org/2001/XMLSchema">
  <FILEINFO>
    <FORMATVERSION>3.00</FORMATVERSION>
  </FILEINFO>
  <REVERBERATIONANDNOISE>
    <RANGE>0</RANGE>
    <VALUE>80</VALUE>
  </REVERBERATIONANDNOISE>
  <REVERBERATIONANDNOISE>
    <RANGE>1000</RANGE>
    <VALUE>80</VALUE>
  </REVERBERATIONANDNOISE>
  <REVERBERATIONANDNOISE>
    <RANGE>2000</RANGE>
    <VALUE>77</VALUE>
  </REVERBERATIONANDNOISE>
  <REVERBERATIONANDNOISE>
    <RANGE>8000</RANGE>
    <VALUE>54</VALUE>
  </REVERBERATIONANDNOISE>
</REVANDNOISEFILE>
```

A.10 Ship XML format

```
<?xml version="1.0"?>
<SHIPFILE xmlns:xsi="http://www.w3.org/2001/XMLSchema-instance"
xmlns:xsd="http://www.w3.org/2001/XMLSchema">
  <FILEINFO>
    <FORMATVERSION>3.00</FORMATVERSION>
  </FILEINFO>
  <SHIP>
    <SHIPNAME>Lybin ship</SHIPNAME>
    <SHIPCLASS>Auto-generated</SHIPCLASS>
    <COURSE>10</COURSE>
    <SPEED>5</SPEED>
    <LATITUDE>0N</LATITUDE>
    <LONGITUDE>0E</LONGITUDE>
    <SELFNOISE>
      <SHIPNAME>defaultship</SHIPNAME>
      <DATE>01-01-2009</DATE>
      <LATITUDE>0N</LATITUDE>
      <LONGITUDE>0E</LONGITUDE>
      <NUMFREQUENCIES>1</NUMFREQUENCIES>
      <NUMSPEEDS>1</NUMSPEEDS>
      <NUMSECTORS>4</NUMSECTORS>
      <NUMDEPTHS>1</NUMDEPTHS>
      <FREQUENCIES>7000</FREQUENCIES>
      <SPEEDS>10</SPEEDS>
      <DEPTHS>5</DEPTHS>
      <NOISEMATRIX>50 20 50 20</NOISEMATRIX>
    </SELFNOISE>
    <CURRENTSONAR>1</CURRENTSONAR>
    <SONAR>
      <SONARNAME>Sonar1</SONARNAME>
      <DEPTHFIXED>true</DEPTHFIXED>
      <DEPTHMIN>5</DEPTHMIN>
      <DEPTHMAX>5</DEPTHMAX>
      <DEPTH>5</DEPTH>
      <TILTFIXED>true</TILTFIXED>
      <TILTMIN>4</TILTMIN>
      <TILTMAX>4</TILTMAX>
      <TILTTRANSMITTER>4</TILTTRANSMITTER>
      <TILTRECEIVER>4</TILTRECEIVER>
      <SIDELOBETRANSMITTER>13</SIDELOBETRANSMITTER>
      <SIDELOBERECEIVER>13</SIDELOBERECEIVER>
      <CALIBRATIONFACTOR>0</CALIBRATIONFACTOR>
      <DETECTIONTHRESHOLD>10</DETECTIONTHRESHOLD>
      <SONARTYPEPASSIVE>0</SONARTYPEPASSIVE>
      <INTEGRATIONTIMEPASSIVE>1</INTEGRATIONTIMEPASSIVE>
      <PASSIVEBANDWIDTH>100</PASSIVEBANDWIDTH>
      <BEAMWIDTHTRANSMITTER>15</BEAMWIDTHTRANSMITTER>
      <BEAMWIDTHRECEIVER>15</BEAMWIDTHRECEIVER>
      <RELATIVEBEARING>45</RELATIVEBEARING>
      <SYSTEMLOSS>0</SYSTEMLOSS>
      <CURRENTFREQUENCY>0</CURRENTFREQUENCY>
      <CURRENTMODE>0</CURRENTMODE>
      <CURRENTPULSE>0</CURRENTPULSE>
      <NUMPULSES>1</NUMPULSES>
      <NUMMODES>1</NUMMODES>
      <NUMFREQUENCIES>1</NUMFREQUENCIES>
      <PULSE>
        <ENVELOPEFUNC>Hann</ENVELOPEFUNC>
        <FILTERBANDWIDTH>100</FILTERBANDWIDTH>
        <FMBANDWIDTH>100</FMBANDWIDTH>
        <FORM>FM</FORM>
        <LENGTH>60</LENGTH>
      </PULSE>
      <FREQUENCIES>7000</FREQUENCIES>
      <DIRECTIVITY>20</DIRECTIVITY>
      <MODES>"defaultmode"</MODES>
    </SONAR>
  </SHIP>
</SHIPFILE>
```

```

    <SOURCELEVEL>221</SOURCELEVEL>
  </SONAR>
<SONAR>
  <SONARNAME>Sonar2</SONARNAME>
  <DEPTHFIXED>true</DEPTHFIXED>
  <DEPTHMIN>5</DEPTHMIN>
  <DEPTHMAX>5</DEPTHMAX>
  <DEPTH>5</DEPTH>
  <TILTFIXED>>false</TILTFIXED>
  <TILTMIN>0</TILTMIN>
  <TILTMAX>50</TILTMAX>
  <TILTTRANSMITTER>0</TILTTRANSMITTER>
  <TILTRECEIVER>0</TILTRECEIVER>
  <SIDELOBETRANSMITTER>10</SIDELOBETRANSMITTER>
  <SIDELOBERECEIVER>10</SIDELOBERECEIVER>
  <CALIBRATIONFACTOR>0</CALIBRATIONFACTOR>
  <DETECTIONTHRESHOLD>10</DETECTIONTHRESHOLD>
  <SONARTYPEPASSIVE>0</SONARTYPEPASSIVE>
  <INTEGRATIONTIMEPASSIVE>1</INTEGRATIONTIMEPASSIVE>
  <PASSIVEBANDWIDTH>100</PASSIVEBANDWIDTH>
  <BEAMWIDTHTRANSMITTER>55</BEAMWIDTHTRANSMITTER>
  <BEAMWIDTHRECEIVER>25</BEAMWIDTHRECEIVER>
  <RELATIVEBEARING>45</RELATIVEBEARING>
  <SYSTEMLOSS>0</SYSTEMLOSS>
  <CURRENTFREQUENCY>0</CURRENTFREQUENCY>
  <CURRENTMODE>0</CURRENTMODE>
  <CURRENTPULSE>1</CURRENTPULSE>
  <NIMPULSES>2</NIMPULSES>
  <NUMMODES>2</NUMMODES>
  <NUMFREQUENCIES>2</NUMFREQUENCIES>
  <PULSE>
    <ENVELOPEFUNC>Hann</ENVELOPEFUNC>
    <FILTERBANDWIDTH>500</FILTERBANDWIDTH>
    <FMBANDWIDTH>100</FMBANDWIDTH>
    <FORM>CW</FORM>
    <LENGTH>75</LENGTH>
  </PULSE>
  <PULSE>
    <ENVELOPEFUNC>Hann</ENVELOPEFUNC>
    <FILTERBANDWIDTH>100</FILTERBANDWIDTH>
    <FMBANDWIDTH>100</FMBANDWIDTH>
    <FORM>FM</FORM>
    <LENGTH>60</LENGTH>
  </PULSE>
  <FREQUENCIES>7000 4000</FREQUENCIES>
  <DIRECTIVITY>22 20</DIRECTIVITY>
  <MODES>"Mode1 " "Mode2"</MODES>
  <SOURCELEVEL>221 221 215 221</SOURCELEVEL>
</SONAR>
</SHIP>
</SHIPFILE>

```

A.11 Sonar XML format

```
<?xml version="1.0"?>
<SONARFILE xmlns:xsi="http://www.w3.org/2001/XMLSchema-instance"
xmlns:xsd="http://www.w3.org/2001/XMLSchema">
  <FILEINFO>
    <FORMATVERSION>3.00</FORMATVERSION>
  </FILEINFO>
  <SONAR>
    <SONARNAME>Sonar2</SONARNAME>
    <DEPTHFIXED>true</DEPTHFIXED>
    <DEPTHMIN>5</DEPTHMIN>
    <DEPTHMAX>5</DEPTHMAX>
    <DEPTH>5</DEPTH>
    <TILTFIXED>false</TILTFIXED>
    <TILTMIN>0</TILTMIN>
    <TILTMAX>50</TILTMAX>
    <TILTTRANSMITTER>0</TILTTRANSMITTER>
    <TILTRECEIVER>0</TILTRECEIVER>
    <SIDELOBETRANSMITTER>10</SIDELOBETRANSMITTER>
    <SIDELOBERECEIVER>10</SIDELOBERECEIVER>
    <CALIBRATIONFACTOR>0</CALIBRATIONFACTOR>
    <DETECTIONTHRESHOLD>10</DETECTIONTHRESHOLD>
    <SONARTYPEPASSIVE>0</SONARTYPEPASSIVE>
    <INTEGRATIONTIMEPASSIVE>1</INTEGRATIONTIMEPASSIVE>
    <PASSIVEBANDWIDTH>100</PASSIVEBANDWIDTH>
    <BEAMWIDTHTRANSMITTER>55</BEAMWIDTHTRANSMITTER>
    <BEAMWIDTHRECEIVER>25</BEAMWIDTHRECEIVER>
    <RELATIVEBEARING>45</RELATIVEBEARING>
    <SYSTEMLOSS>0</SYSTEMLOSS>
    <CURRENTFREQUENCY>0</CURRENTFREQUENCY>
    <CURRENTMODE>0</CURRENTMODE>
    <CURRENTPULSE>1</CURRENTPULSE>
    <NUMPULSES>2</NUMPULSES>
    <NUMMODES>2</NUMMODES>
    <NUMFREQUENCIES>2</NUMFREQUENCIES>
    <PULSE>
      <ENVELOPEFUNC>Hann</ENVELOPEFUNC>
      <FILTERBANDWIDTH>500</FILTERBANDWIDTH>
      <FMBANDWIDTH>100</FMBANDWIDTH>
      <FORM>CW</FORM>
      <LENGTH>75</LENGTH>
    </PULSE>
    <PULSE>
      <ENVELOPEFUNC>Hann</ENVELOPEFUNC>
      <FILTERBANDWIDTH>100</FILTERBANDWIDTH>
      <FMBANDWIDTH>100</FMBANDWIDTH>
      <FORM>FM</FORM>
      <LENGTH>60</LENGTH>
    </PULSE>
    <FREQUENCIES>7000 4000</FREQUENCIES>
    <DIRECTIVITY>22 20</DIRECTIVITY>
    <MODES>"Mode1" "Mode2"</MODES>
    <SOURCELEVEL>221 221 215 221</SOURCELEVEL>
  </SONAR>
</SONARFILE>
```

Appendix B: Abbreviations

COM	Component Object Model
EDF	Exported Data Format
FFI	Norwegian Defence Research Establishment
LYBIN	LYdBane og INTensitetsprogram (acoustic model)
NDMA	Norwegian Defence Materiel Agency
XML	Extensible Markup Language

References

- [1] E. Dombestein and A. L. Gjersøe, "LYBIN 6.1 - User Manual," FFI Rapport 2012/01463 (Ugradert), 2012.
- [2] E. Dombestein and K. W. Ektvedt, "LYBIN 6.2 - user manual," FFI Rapport 2014/00512 (Ugradert), 2014.
- [3] K. T. Hjelmervik, S. Mjølunes, E. Dombestein, T. Såstad, and J. Wegge, "The acoustic ray trace model LYBIN - Description and applications," presented at the UDT 2008, Glasgow, United Kingdom, 2008.
- [4] E. Dombestein and T. Jenserud, "Improving underwater Surveillance: LYBIN Sonar performance prediction," presented at the MAST 2010, Roma, Italy, 2010.
- [5] E. Dombestein, "LybinCom 6.2 - description of the binary interface," FFI Rapport 2014/00511 (Ugradert), 2014.
- [6] E. Dombestein, S. Mjølunes, and F. Hermansen, "Visualization of sonar performance within environmental information," in *Oceans 2013*, Bergen, 2013.
- [7] E. Dombestein and F. Hermansen, "Integration of Sonar Performance Modelling in Sonar Operator Training, Mission Planning and High Risk Decisions," presented at the MSG-126, Washington DC, USA, 2014.
- [8] R. J. Urick, *Principles of underwater sound*, 3rd ed.: Peninsula Publishing, 1983.
- [9] Available: www.sippican.com
- [10] H. Weinberg, "Generic Sonar Model," Naval Underwater Systems Senter TD 5971D, 1985.

About FFI

The Norwegian Defence Research Establishment (FFI) was founded 11th of April 1946. It is organised as an administrative agency subordinate to the Ministry of Defence.

FFI's MISSION

FFI is the prime institution responsible for defence related research in Norway. Its principal mission is to carry out research and development to meet the requirements of the Armed Forces. FFI has the role of chief adviser to the political and military leadership. In particular, the institute shall focus on aspects of the development in science and technology that can influence our security policy or defence planning.

FFI's VISION

FFI turns knowledge and ideas into an efficient defence.

FFI's CHARACTERISTICS

Creative, daring, broad-minded and responsible.

Om FFI

Forsvarets forskningsinstitutt ble etablert 11. april 1946. Instituttet er organisert som et forvaltningsorgan med særskilte fullmakter underlagt Forsvarsdepartementet.

FFIs FORMÅL

Forsvarets forskningsinstitutt er Forsvarets sentrale forskningsinstitusjon og har som formål å drive forskning og utvikling for Forsvarets behov. Videre er FFI rådgiver overfor Forsvarets strategiske ledelse. Spesielt skal instituttet følge opp trekk ved vitenskapelig og militærteknisk utvikling som kan påvirke forutsetningene for sikkerhetspolitikken eller forsvarsplanleggingen.

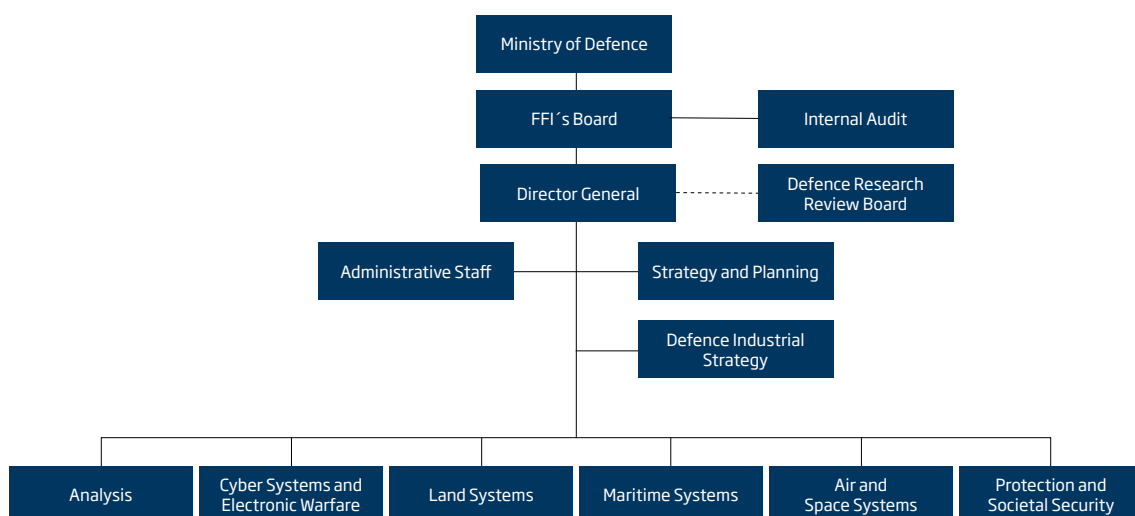
FFIs VISJON

FFI gjør kunnskap og ideer til et effektivt forsvar.

FFIs VERDIER

Skapende, drivende, vidsynt og ansvarlig.

FFI's organisation



Forsvarets forskningsinstitutt
Postboks 25
2027 Kjeller

Besøksadresse:
Instituttveien 20
2007 Kjeller

Telefon: 63 80 70 00
Telefaks: 63 80 71 15
Epost: ffi@ffi.no

Norwegian Defence Research Establishment (FFI)
P.O. Box 25
NO-2027 Kjeller

Office address:
Instituttveien 20
N-2007 Kjeller

Telephone: +47 63 80 70 00
Telefax: +47 63 80 71 15
Email: ffi@ffi.no